

SERVING CLEOBURY COUNTRY

AUGUST 2022

A SPECIAL DAY FOR CLEOBURY



July 2nd was a particular day for the town, with Selina Graham, High Sheriff of the County, gracing us with her presence to declare the Men's Shed officially open. The amount of interest in the result of almost three years work was confirmed by a crowd of 120 people attending the ceremony, despite the rain that dampened the ground but not the enthusiasm of our special guest or those who came to see and hear her. **See Page 11.**

BANK HOLIDAY IN BLOOM

There's a really good idea blooming in the town this month. It's based on a suggestion from Ben Leigh Perry, who approached the Town Council and suggested a competition for attractive gardens to brighten up the face-of-the place.

The Council have taken up the suggestion with some real enthusiasm. Over the weekend of the 27th to the 29th they'll be looking at photos of gardens and deciding who has the most Fabulous Front Garden, the Best Hanging Basket and the Prettiest Planter. It's all part of the Love Cleobury presentation, with prizes to be won in those three classes.

Nominations and photos to cleobury.council@gmail.com. There is no deadline given in the publicity on Page 61 of this issue, so play safe and get your entry in as soon as possible. The best of luck to all who enter.

LLOYD'S BANK TO CLOSE

Well, it wasn't exactly unexpected, was it? When the High Street property Lloyds occupy was sold off some years ago, you could put money on what has emerged as their long term plan. And when the opening hours shrank to the current level, people did wonder if a part-time bank was a sign of the future of banking.

When I wanted to open a new business account, quite separate from the Cleobury Clarion one that was well established, I was told I'd have to go the Ludlow or Kidderminster to do that. And when I'd managed that at the Ludlow branch, it was something of a surprise to find that this new account is not locally based - it's in Great Yarmouth.

So we'll bid them farewell in January and hope that the very helpful ladies who are the regular staff will be offered an easy to reach alternative.



What can a Nutritionist help with?

- Digestive issues
- Chronic Fatigue
- Sleeping issues
- Painful periods
- Menopause
- Migraine
- Type 2 Diabetes
- High Cholesterol
- Skin Conditions
- Children's Health
- Anxiety/Depression
- Vegan/vegetarian diets
- Weight Management
- plus many more



Victoria Allen Funeral Services

An Independent Family Business offering a
Personal and Professional Service

Over 25 years' Experience

Competitively Priced

Private Chapel of Rest

Golden Charter Pre-Paid Funeral Plans

Covering All Areas

Home Visits Available

01584 879035

24 Hour Service

8 Charlton Rise, Ludlow, Shropshire, SY8 1ND
www.vallenfuneralsludlow.co.uk
Email: vafs@btinternet.com



The Cleobury Clarion, August 2022

Volume Eighteen - Edition FIVE



*David Robinson, the very generous landlord of the Mens Shed, unveils a plaque in memory of our late treasurer, Keith Martin. Peter Blackburn left, High Sheriff Selina Graham right.
See Page 11.*



*Clee Hill Community Wildlife Group Save Our Curlews.
See Page 15.*



*The Festival At The Edge, honouring Simon Evans.
See Page 29.*

And On Other Pages....

- | | |
|-------------------------------------|---|
| 5 - Severn Hospice Support Group | 37 - Lacon Childe School Fate |
| 7 - The Garden Trail | 39 - Cleobury Mortimer Benefice |
| 9 - Nightingale Nursing Fund AGM | 41 - Simon Morton on Gardening |
| 13 - The Breakfast Club | 43 - Carole Claytpn = Funeral Celebrant |
| 17 - St Mary's Tower Project | 45 - Mrs Grumpy |
| 19 - The Royal British Legion | 47 - The Social Calendar |
| 21 - Stepping Out! Walking News | 51 - The Nature of Wyre |
| 23 - August in the Wyre Forest | 53 - The Cleobury Community Hub |
| 25 - Philip Dunne MP | 57 - Let's Beat the Scammers |
| 27 - New Series: Lloyds Bank Laughs | 61 - The Town Council Report |
| 32/33 - Doddington Lodge | 63 - Local Information |



DRY CLEANING & LAUNDRY SERVICE
20 HIGH STREET, CLEOBURY MORTIMER
01299 270571
HOUSEHOLD & COMMERCIAL WORK WELCOME
FULLY ATTENDED, OPEN 7 DAYS

Self Service ~ Full Service Wash/ Dry/ Fold/ Ironing ~ Large Machine for Big Items
Service Washing for Duvets/ Blankets/ Sleeping Bags ~ Team Sports Kit Laundry Service
Equestrian Rug Cleaning ~ Laundry Service for Pet Items
Professional Shirt Service ~ Nikwax Wash & Proof for Outdoor Clothing

.... the place to air your dirty laundry!



RED HARE

45 HIGH STREET
CLEOBURY MORTIMER
WWW.REDHARESALON.CO.UK

01299 270702

YOUR
HAIR
IS
OUR
BEST
ADVERT

PPD FREE - PARABEN FREE - SULPHATE FREE - CRUELTY FREE

“Red Hare now offers a private hairdressing room. Perfect for those wanting more privacy, peace and quiet“



CLEOBURY CHIROPRACTIC

31 High St. Cleobury Mortimer DY14 8DQ

JS James
Smith
OSTEOPATHS

We offer both **CHIROPRACTIC** and **OSTEOPATHY**,
using gentle methods suitable for all ages.
Appointments available outside of normal working hours.
Both practitioners are fully registered, insured & regulated.

Sue Brown
MA MSc DC MMCA
CHIROPRACTOR

- * BACK PAIN * SCIATICA * POSTURAL PROBLEMS
- * JOINT PAIN * HEADACHES (arising from the neck)
- * Some SPORTS INJURIES

PLUS * COMPUTER (DSE) WORKSTATION ASSESSMENTS
* BACK CLASS – Weekly exercise class for those with
back/neck pain.

Hands for Heroes
Free Chiropractic Care for War Veterans



iO
THE INSTITUTE
of OSTEOPATHY



01299 519351 / 07932 000028 / 07506 287191

www.notjustaboutbackpain.com

www.jsosteopaths.co.uk

GCC registered
General Chiropractic Council
www.gcc-uk.org


General
Osteopathic
Council
I'M REGISTERED
Registration no. 9254
www.osteopathy.org.uk

MALVERN FESTIVAL TICKET SCAM

West Mercia Police issued a warning a few days before the Food Festival at Malvern opened on July 9th, that scammers were trying to sell tickets. As the event offered free admission, you can only hope that they didn't catch too many innocents with such a crude trick put out on Facebook and other social media. Dare we say that it wouldn't happen in the Clarion?

Take care out there, this world houses a lot of cynical villains who will rob you at any opportunity.

SEVERN HOSPICE SUPPORT GROUP

We have money in the account that we are proposing to forward to the Hospice. Therefore we are holding a meeting to discuss this and future fundraising.

The date is Thursday, August 11th at The Bramleys, Pickthorn, Chorley, WV16 6PU at 7.00 p.m. Anyone who wishes to join this group will be made most welcome, so please feel free to pop along. We need

new ideas for fundraising after the Gin Walk was such a fantastic success.

Severn Hospice is a wonderful charity that is there for care or advice for anyone who is diagnosed with a terminal illness.

Rosemary Abbiss

WHOOOPS!

Giving Madge Shineton's Youth Report in the June Clarion a slip was made in her e-mail address. It should be madge.shineton1@gmail.com The editor offers his apologies.

A STRAWBERRY SUNDAY

The Friends of Saint Mary's Church are hosting a rather special afternoon tea at the Coach House in Hopton Court on Sunday the 7th this month. There will be a glass of fizz with strawberry garnish upon arrival, followed by traditional afternoon tea with accompanying music courtesy of the highly talented Ludford Duo. It would make an ideal treat for that special person in your life.

Further details and tickets at £15 a head from Diane Waddington at CM 272820.

SEPTEMBER BEER FESTIVAL

The XII Holy Ales Festival is a new event, scheduled for September 23rd and 24th. It also offers local businesses the chance to sponsor a barrel of beer. That will cost £100 and if you get in quickly you can choose which beer.

The sponsors' logos will appear on their barrel and in the programme. There are also two ciders available as an option. The email contact is cleoburychurch@hotmail.com or you can telephone 01299 489135 for more details.

The Festival will be free to enter and will feature beers from local breweries including Hobsons, Wye Valley, Bewdley and Teme Valley All proceeds will go towards improving church facilities, including the big job currently under way in our famous Twisted Spire.

A WISE BIT

The roots of education are bitter, but the fruit is sweet.

Aristotle



The Oak Boy
TRADITIONAL OAK FRAMING
SINCE 2011
07398 233443

John Caswell
Johnjocaswell@yahoo.com

SERVICES AVAILABLE

➤ Flooring	➤ Landscaping
➤ Manufacturing & fitting doors & windows	➤ Patios
➤ Kitchens	➤ Brick & Stone work
➤ Cladding	➤ Roofing, Tiling, Guttering
➤ Studwork	➤ General Building
➤ Bespoke Oak Framing	➤ Property Maintenance

Call now for a Free Quotation!



CM BESPOKE CARE

Q Care Quality
Commission
Registered

S P C
Shropshire Partners In Care

Personal, Nursing and Domestic care.
Tailored to your needs.

Call for a free consultation

Tel: 01746 718816
Mobile: 07943834132

www.cmbcare.co.uk
www.facebook.com/cmbcare
email: cmbbespokecare@btconnect.com



07971 361901 or 01299 832484

Complete Bathroom Installations
Bathroom Refurbishment or Repairs
Wet Rooms
Professional Wall and Floor Tiling



For a quality and guaranteed service, call Stuart for a free quote
Highly Recommended / References available - see my reviews on www.freeindex.co.uk

FOR THE BATHROOM YOU DESERVE!

Flowers By Fiona *est 1991*

Fresh Flowers made to order
Special Occasions
Weddings, Anniversaries, Birthdays
Sympathy Tributes

19a High Street,
Cleobury Mortimer

Tel: 01299 272 995



Phoenix Environmental Ltd.
Contaminated Land Consulting and Contracting

Bringing 17 years of experience to bear, we provide straightforward advice help guide you through planning, or deal with your contaminated land, geotechnical and geo-environmental issues.

Phoenix Environmental offer both site and office-based services including:

- Regulatory Liaison and Planning Approval
- Phase 1 Desk Studies (Geology, Hydrogeology, Hydrology, History)
- Intrusive Investigation (Phase 2) Design and Application
- Trial Pitting, Cable Percussive Boreholes, Dynamic (Window) Sampling
- Flood Risk Advice
- Geotechnical Investigation/Advice, Foundation Advice
- Risk Assessment (GQRA/DQRA)
- Remediation Strategies/ Verification Reporting
- Environmental Audits/Site Audits
- Site Based engineering and supervision
- Drone Surveys/Media Production



We'll be there to guide you through every stage.
www.phoenixenviro.co.uk

Contact us: email. enquiries@phoenixenviro.co.uk Tel. 07800 646691

THE GARDEN TRAIL

The Cleobury Garden Trail on June 26th, was an interesting and enjoyable occasion. All the gardens on display were looking marvellous, and it was the perfect sunny day to enjoy them.

Friendly locals and visitors walked around holding their leaflets, prompting folks to chat and enquire where the next garden was, or praise the one just visited. More friendly helpers in the Church, serving welcome refreshments, and giving a chance to have a sit down.

There were paintings on display in two gardens and also fences with works of art on.

This year's Trail was dedicated to Joyce Wakeman who sadly passed away recently. A passionate plantswoman, who was kind and generous, and shared her plants with others. Her garden which she had lovingly worked in for 55 years was one of those we visited.

I look forward to the Cleobury Garden Trail 2023. Thanks to all who took part in any way to make the afternoon so enjoyable.

Marian Rees

CATHERTON

COMMON UPDATE

Curlew, skylark and meadow pipits are just three of the important species that use Catherton common to breed and raise their young. They are all ground nesting birds that rely on hiding in the vegetation and avoiding disturbance. At this crucial time of year they are not the only ones trying to keep out of the way and feed their offspring. The whole range of amphibians and reptiles are also using the common as their home.

Partly for this reason there are many laws that protect the Common and prevent misuse of the area. Unfortunately, not everyone is aware of these rules and laws and this can lead to people doing things they shouldn't do. There are two laws I would highlight at this time.

It is an offence under the Highways Act to drive a motor vehicle on the common unless it is a highway.

It is against the law to allow a dog to roam off the lead on Common Land between 1st March and 31st July. In order to protect our ground nesting birds and avoid any

disturbance, please act responsibly:-

Reduce to a minimum driving vehicles off-road onto the common, do not take vehicles where you do not have a right of access. Keep to rights of way and well worn paths as much as possible when you access the common

Clive Dean

CREATIVE WRITING

Oh dear, the fool of an editor turned up with a piece written about a subject used two months ago! He will be given lessons in memory by Mrs Grumpy in future.

Fortunately three ladies got it right and presented works on the matter of anger. Vivian told of a care home worker assaulting a patient and when the matter came up for discipline, the person concerned handed in their notice! Lilian had a holiday job in France that sounded good, but when it came to paying wages there was nothing. From Marian a happier tale, of a child sent to England from Nigeria, to find racial prejudice until a teacher introduced her to sport. She flourished and in time became a teacher herself. For this month our subject is 'Friends'; editor please note!

TDC CARPENTRY SERVICES

Fully insured qualified professional
Excellent workmanship and quality customer care
From hanging doors, fitting kitchens to bespoke projects

Tim Clare - 07890 519980

Professional. Affordable. Local.



Electrical Installations

No matter the size, we can gladly undertake all Domestic, Commercial and Industrial installations you require.

A family run business, with over 25 years industry experience.

From period properties to agricultural solutions, we provide a professional service every time. We also do call outs and emergency work.

Renewable Energy

Protect yourself from rising energy bills by considering renewable energy.

Solar PV is the most accessible way you can save energy by producing electricity from the sun. Earn a tax free income from the electricity your system produces.

Speak to us about how renewable energy can benefit you or your business.

Whatever your query, give us a call.

T: 07971 096267 / 08450 564173

W: www.awe-services.co.uk

Two Staks, Eagle Lane, Cleobury Mortimer, Worcs. DY14 8RA



NIGHTINGALE

NURSING FUND AGM

The accounts have been audited and we are ready to share them with the public. We are meeting at the Sports & Social Club, at 7.00 p.m. on Sunday September 11th. A date for your diary!

All the officers will be up for election and fundraising will be discussed. Little has been added to the funds during Covid so a cash injection is needed.

Everyone is most welcome to attend, even if it's just to find out how this fund supports patients in a medical crisis. Please feel free to pop along and show support.

Rosemary Abbiss

TREVOR WOOD

Trevor has been quiet for two years, thanks to the matter of Covid-19 and the pandemic. He's available to provide what he calls 'keyboard comedy' to clubs and other events, at no charge. He did have a regular spot with the Doddington Friendship Club, but apparently they have disbanded, leaving a gap in his programme. He's on CM 272666.

CLEOBURY W.I.

The visit to Frank P Matthews Trees for Life was very well attended and enjoyed by all. Following an introductory talk, we climbed aboard a tractor

trailer for a guided tour of the extensive grounds. The morning concluded with a delicious buffet lunch and an opportunity to browse the plant shop.

Our monthly meeting was held at Cleanly Seat Farm, where Gill Guest gave advice on choosing flowers for making hand-held bouquets. Armed with secateurs, we wandered round the garden, picking whatever we wished to create our own flower arrangements. The weather was perfect for the occasion and thanks go to Gill for welcoming us to her lovely garden.

Further donations for the children's clothes recycling initiative have been received and sorted into boxes by age-group. These can be found in the entrance to the Market Hall, and anyone in the community is welcome to take whatever clothes they can make use of for their children, at no cost. This is a joint venture with Neen Savage WI and is intended to reduce the number of clothes just thrown away.

Clebury WI was well-represented at the opening of the Men's Shed on July 2nd. Coffee mornings at the Larchbarn are always popular and will be regular events on our monthly calendar.

The centenary garden is looking colourful, and invitations are being sent out for the tree-planting and afternoon tea on September 16th. Many thanks to Pat Smith for her beautiful pencil drawing that is to be used on our commemorative tea towels; available soon.

August's meeting is on Tuesday 9th, a historical walk round Cleobury at 6.30pm, followed by cheese and wine at 10 Church Street. Members are invited to bring a guest if they wish and provide either a salad or dessert.

For further information contact Clare 01299 271905 or Judy 01299 270983 or email judysant10@gmail.com

Val Sniadowski

OPEN DAY SUCCESS

Jo and Chris Bargman write to thank all who supported their recent Open Garden at Upper Marches, out on Catherton Common. It was part of the national Open Gardens Scheme that raises money for a number of charities and this year they greeted 130 visitors and raised £1300 for those in need.

It's always a good place to visit, much praised by our own Gardener at Large, Simon Morton. I must make it there next year.

JR



The Well Being

Holistic Therapies

Cleobury Mortimer DY14 8AS

www.thewellbeing.co.uk

April Boardman

Reiki Master ITEC MFHT Dip Hyp

Do you have aches & pains, ongoing health issues or just need to relax? Help is at hand!


**Deep Tissue & Remedial Massage
Reiki & Crystal Healing**

**Hot Stone Massage-Aromatherapy- Reflexology
Pregnancy Massage & Hypnotherapy**

20% off your 1st treatment!

Tel 01299 513148 or 07881494036 or Book Online!

People when thinking of having Home Care often ask who are your staff? What sort of company are they?

TLC are a family run care provider supporting people with Disabilities, Dementia, Aging Population and Acquired Brain Injury to remain living at home for as long as it is safe to do so. Clients when considering home care will often find it difficult to accept and wonder about who are the staff and what qualifications they have? I cannot speak for other companies, however in our company it is made up from many sectors of our society and when these are put together, we have an Outstanding Team. 

One of those sectors are the future NHS professional, we have Daisy who is in her last year of her training to be a midwife, Lucy who is working towards the end of her training to be a Physiotherapist. Christina and Aila about to start their journey into nursing. We have further staff who have just been accepted into the NHS. These lovely kind young adults not only study many hours both in university, on hospital wards, they also give to us and have helped us support our clients for many years! Most joined us while still at college.

TLC have ex-nurses that come to us after raising their family and some, in recent times have re-joined their colleagues in the NHS.

We have staff who have raised their kids and now want a career, TLC will train or retrain people to help people reach their full potential and become one of our Outstanding Team.

We encourage kind caring and honest people of all ages and backgrounds who want to make a difference to people's lives to join our team. TLC invest heavily in people with ongoing support and training to help our new colleagues achieve their goals and reach their full potential. Once initial training is complete and they have been assessed as competent, TLC Induction Manager and our Training Manager will support staff through to achieve their Level 2/3 in H&S Care

Our Training

TLC's Training Team offers full free training on site and support staff through their Care Certificate. We have strong connection with an outside Training Provision who help our staff to achieve their Level 2/3 in H&S Care. Currently we have 32 members of staff that have already achieved Level 2/3 in Health and Social Care. We have qualifications at level 4 and five of our Senior Managers have Level 5. All staff that are new to care are required to achieve Level 2 within the first two years of their employment.

Contact us

For further enquiries please regarding Care or employment please ring TLC Care at Home 01299 272897 for an informal chat. Visit www.tlccareathome.com or wecare@tlc-careathome.co.uk

*Unlock your Potential.
Success starts here!*

COVID-19 Update

All our staff are provided with full PPE's including Gloves, Full Aprons, Sleeves, Visors, Gloves Surgical Masks.

Video training on Donning and Doffing PPE's sent out regularly.

Staff sign health declarations daily, Staff have weekly Covid-19 test. Most of our staff have now been vaccinated against Covid-19. TLC work closely with government regulation and update our risks assessment accordingly.

THE MEN'S SHED IS OPEN FOR BUSINESS



The official opening of the Men's Shed could not have been better. The County High Sheriff, official representative of Her Majesty the Queen, attended the ceremony, cut the tape and made the day complete. A great compliment to the town.

So many other notables were remembered, with a plaque in memory of ex treasurer Keith Martin unveiled by David Robinson and the Shed itself opened to reveal a range of wood working tools that will be available to members, subject to them being instructed by those who know and understand safe usage.

Walking around the busy interior, you see work stations

with supporting tools stored in specific colours that pick up those on the machines. It is clear that safe operation is a priority in this place. We will publish a list of those who have donated and sponsored tools in a future issue, plus local craftspeople who have given time and knowledge free of charge. Every one of them deserves the gratitude of all who use this fine facility.

We should make it clear that this place is not just a workroom for men with experience of the tools available. It serves much more than that, with the opportunity for men made lonely by redundancy, the death of a partner or simply nowhere to turn when lonely, to sit down, share a cup of tea in the next door social area, and talk.

For best use of the facility, signing up as a member gets you access when it's open and the tuition to use whatever machine is needed for your project. The Shed has already established a good name for its production of items like nesting boxes to help the birdlife that is so attractive in the area.

Cost at this early stage is set at £5 a month for those who can afford it. That figure is estimated to cover operating costs if enough men sign up. If someone with a particular skill

wants to contribute but finds the cost too much, there is the matter of a charitable donation to help. What will make the place work well is strength in numbers and a willing helper will not be refused.

There is a member restoring a harpsichord, with slithers of ebony taken from the neck of an old cello used to make new keys, with advice on slicing from engineer Colin Tolley. What had looked like an almost hopeless task is well under way now, with rare wood finding a second life. True waste-not, want-not at work.

A caravan next to the shed provides a seating area, thanks to member Ron Blything using skills learned as a carpenter restoring pubs. Six hours using the old pew tops from the parish church and there's room for all. The place is currently open from midday to 4.00pm on Tuesday and Wednesday and on Friday from 2.30 until 4.00 for a cuppa and a chat.

As committee chairman Peter Blackburn puts it: "There is so much positive opportunity lying ahead."

It's on the Tenbury Road Industrial area, opposite the Freezer Centre and you'll find a warm welcome if you look in on the open days. A community asset that will help build on our community spirit. Great!

Charlton Interiors

UPHOLSTERY & INTERIORS

Rosemary Jones

Mob: 07837 609229

Phone: 01584 861823

Email: info@charltoninteriors.com

www.charltoninteriors.com



BESPOKE YOGA TUITION



Relax Breathe Stretch Tone

One to one Yoga lessons

BWY trained teacher with over 15 years experience

Can travel to your home

Angela Kazimierczuk

07870 506655

CLEOBURY MORTIMER PARISH HALL

The largest hall in the area

We are open again so would you like to celebrate an event, party, wedding, or just a get together?

We are able to cater for small or large parties, sit down dinner parties for up to 100 people with or without a bar.

Come and have a look at what we can offer.

To book, call Janet on 01299 271070

'FLICKS IN THE STICKS'

7.30 Saturday August 27th

"MAMMA MIA - Here we go again"

An all-new musical sequel based on the music of ABBA with the original cast and some new additions

Interval orders taken for fish and chips or hot dogs

Licensed Bar. Admission £5.00

THE TOWN'S BEST VALUE

Do you know a 2, 3 or 4 year old who would like to join our fantastic nursery?



Stottesdon Gateway NURSERY
We really care and make learning fun

We can offer:

- A safe and nurturing learning environment with dedicated and caring staff.
- High quality provision with strong links to Reception.
- An amazing outdoor area and use of the school facilities and space.

- Nursery places for 2, 3, 4 year olds, available from September 2021
- From 15 - 30 funded hours available.
- BEFORE & AFTER SCHOOL & HOLIDAY PROVISION for children aged 2 - 11 years old.

Ofsted Outstanding Provider

TO BOOK A TOUR :

Stottesdon C of E Primary School

Stottesdon

Shropshire

DY14 8UE

TEL: 01746 718617

Nursery and Wrap-around sessions (term-time)		Fees
Early Start	7:30am - 8:00am	£4.00
Breakfast Club	8:00am - 8:45/9:00am	£4.00
Morning Session	9:00am - 11:30am	£10.00
Lunch club	11:30am - 12:30pm	£4.00
Afternoon Session	12:30am - 3:00pm	£10.00
After School Club	3:00pm - 5:30pm	£10.00

THE BREAKFAST CLUB

Another good turn-out on July 12th to hear John Greaves supplement the presentation he gave in April. His sobering message was that climate changes we are now experiencing are taking place far too quickly to be the result of natural variation – human activities are driving them. The atmospheric concentration of carbon dioxide, the most important greenhouse gas has increased by some 40% in a mere two centuries. Recent global warming has reached about 1.25°C and, although COP26, held in Glasgow last year, set the goal of limiting the rise to 1.5°C, this is unlikely to be met. The actual rise by 2030 is more likely to be about 2.7°C. If this turns out to be the case, the effects will be disastrous, with some 75% of the world's population seriously affected by rising sea levels, climate change, and extreme weather events.

One particularly worrying process is the erosion and breakdown of the Thwaites Glacier in Antarctica. An exceptionally large glacier, about 75 miles wide, which flows into the ocean at about

1.2 miles per year. Not only is it melting more quickly each year, but it is also being eroded from below by warmer sea water. If it were to break free from the underlying rock, and slide into the sea, it could raise sea levels globally by about 26 inches. As all the mechanisms which could accelerate its breaking free are already happening, it has ominously been dubbed 'The Doomsday Glacier'.

COP26 was hailed as a great success, but the promises to cut greenhouse gas emissions, made by governments across the globe, must be converted into action. However, even if governments act now, the biggest challenge is behaviour change across the global population. Locally, Cleobury Mortimer Town Council has declared a climate emergency and has agreed to set up a Climate Action Working Group. If you are interested in joining this group, please contact the Town Clerk.

Our next meeting is scheduled for August 16th, but there will not be a speaker on this occasion. Those wishing to attend should contact Angela Drennan (270636) to book places.

READING GROUP

On one of the hottest evenings of the year, eight of us gathered to exchange views on *The Vanishing Half* by Brit Bennett. Not all had read it but those who did enjoyed the very moving story. A book with a fascinating concept, believable and intriguing. Set in the USA, it tells the tale of twin sisters who are black but so light skinned that one ends up living a life as a white woman. Quite thought provoking. Spanning three generations many subjects are at the centre of today's society, including sexuality, diversity, equality and class. Topics such as gender were sympathetically written about. How people perceive themselves and how others perceive them is an important topic.

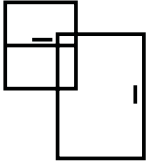
Some points raised; Too many issues for one book? A strange finish, not an end. More focus on the twins and their mother. Most of us are keen to read the author's previous book, always a good recommendation. For August another diversion, first published in 1938, *Miss Pettigrew Lives For a Day* by Winifred Watson. Great to have such varied choices thanks to members input. *Deana Kimber*



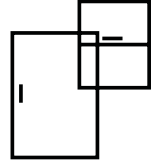
Kim Stanley
30, High Street
Cleobury Mortimer
Shropshire
DY14 8DQ

Tel. 01299 271800
www.kimstanley.co.uk





Ashley Bannister Windows & Doors



- UPVC Windows & Doors
- Composite Doors
- Porches & Conservatories
- Glass Unit Replacement
- Fascia, Soffit & Guttering
- Handles & Letterboxes
- Hinges & Window Restrictors



No Job Too Big or Small
Certass Approved Installer
Local Tradesman Based in Highley

ashban94@hotmail.com
Ash: 07817 785245



Twit - Twoo Falconry

- **Static and flying displays with owls & falcons**
- **Fetes and fayres**
- **3 hour bird experiences based in clows top**
- **Garden parties and birthdays**
- **1-2 hour talks for indoor hall and outdoor visits**



**For quotes and bookings ring Steve Woodison 07738014884 or
Email scw1960@hotmail.co.uk**

MIKE AND SHELLEY ROBERTS

Haulage Contractors

Supplier of Aggregate and Asphalt products

12 Lacon Close, Cleobury Mortimer DY14 8EF

07860 669350

07966 045012

CLEE HILL WILDLIFE GROUP



Thanks a lot to all the Clarion readers who sent records of Curlews to the Community Wildlife Group. Together with our own observations we found eight pairs this year. Two pairs found in 2021, one at a regular site near Cleeton St Mary, and another found near Wheathill for the first time last year, did not come back. We again worked with the Shropshire Ornithological Society (SOS) to find as many of the nests of these eight pairs as possible, and three were found and protected with an electric fence.

The fences protect the eggs from mammalian predators,

but are less effective in keeping out avian predators, and one of these nests was predated, probably by Crows. Seven eggs hatched in the other two fenced nests, and the chicks were all fitted with radio-tags, but tracking showed that they were all predated within a few days, well before they could fly.

We have no evidence to suggest that any chicks hatched from other nests that we did not find and fence. If you know differently, please tell Chris Bargman 01299 270514, email: chcwg@shropscwgs.org.uk. Also tell Chris if you know of a nest site that you haven't told us about yet. Please don't assume we know of them all.

Thanks a lot too to all the farmers and owners who gave permission to the project to look for Curlews on their land, erect fences, and track the radio-tagged chicks, and to the Cle e Hill Commoners Association for support.

The SOS project also worked in two other Community Wildlife Group areas. Three nests were found in each area,

and altogether 18 chicks were tagged, but they were all predated, usually within a few days of hatching. This result is even worse than last year, when all except one of 21 tagged chicks were predated. Foxes are the main predator, but Buzzard and Carrion Crow, and perhaps Raven and Red Kite, also contributed. All these predators have one thing in common – their numbers are much higher than the naturally sustainable level because they feed on the 60 million gamebirds released each year into the British countryside for shooting, only one-third of which are actually shot. SOS has called for gamebird releases to be limited to the number that are actually shot. At the current rate of decline the Shropshire Curlew population will halve in 12 years, and virtually disappear in 25, so this action is urgent.

For more information, see the SOS website, www.shropshirebirds.com/save-our-curlews/

Leo Smith

Are you thinking about Equity Release?

- **Free** Advice
- **No negative equity guarantee**
 - **Pay off** existing debts
- **Help** your family when they need it most
 - **Boost** your retirement fund
 - **Stay** in the home you love
- Access to highly competitive **life insurance** policies
- Qualified **Will Writer** so call me to have your Will written

Call me now to find out more

Equity release will reduce the value of your estate and may effect your entitlement to means-tested benefits.

07966366505 | Stephanie@midasfp.com | www.midasfp.co.uk
Midas Financial Planning Services Ltd is authorised and Regulated by the Financial Conduct Authority



I'm Stephanie

**07966
366505**



Find Your Smile at Cleobury Dental Practice

Whether you're looking for dental implants to replace missing teeth, invisible braces for a straighter smile, boosting your confidence with teeth whitening or a dedicated dentist for your regular care, you can find it all here in the heart of historic Cleobury Mortimer.

- Modern, state of the art facilities and the latest dental technology
- Free car parking adjacent to the practice and step-free access to our dentists' surgeries
- Enjoy private dental care from just 47p per day with our membership plans
- Highly experienced in helping those with dental phobias

Services Provided

- Tooth-Coloured (White) Fillings
- Sedation for Anxious Patients
- Teeth Straightening with Braces and Invisalign
- Dental Implants (Replacement of Missing Teeth)
- Emergency Appointments Slots Available (first come first served)
- Hygienist Services
- Private and NHS Care (NHS subject to capacity)

Opening Hours

Mon, Tue, Wed and Fri **9am-5pm**
Thu **9am-7pm**
Saturdays **by appointment only**

Tel: 01299 271 747

www.cleoburydental.co.uk

BDA Good Practice
Member

 **invisalign**
PROVIDER

SANDRA ENGLAND

Pat Morgan and family would like to thank everyone for their kind messages and sympathetic cards following the sad death of Sandra. Also for the attendance at her funeral, where the amount of £500 was collected for Cancer Research. Thank you all once again.

**SAINT MARY'S
TOWER PROJECT -
UPDATE**

Since the June edition of Clarion we have made significant progress with the tower project. The most recent development is that the Cumbria Clock Company will be removing the clock from the tower and taking it to their works for overhaul some time in the week commencing August 1st. This is good news as it will be the first practical sign of things happening.

An order has been placed with Nicholson Engineering of Bridport for the bell-

frame painting. This is the firm which did the last work on the bells in 2011 and we are pleased to be working with them again. We have agreed to supply volunteer labour to assist with the dismantling and reassembly of fittings necessary to give clear access for the painting, and this will give us a useful discount on the price. The frame painting will take place between 3rd and 28th October, and the bells will be out of action during that time.

We are working with contractors to agree a final plan for the staircase. Before this can be agreed we have to have a survey of the floor to check whether it will be strong enough to take the weight of the staircase. This will involve drilling a hole in the floor and extracting a core for analysis. At the moment we're waiting for permission from the Diocese to do this. We will also need an archaeologist to be present when the hole

is drilled, in case anything interesting is uncovered.

Our fund-raising is progressing. In addition to the generous donation from the Friends of St Mary's, we have secured grants from the Church Buildings Council towards the clock work, and from Shropshire Historic Churches trust for the project generally. Other grant applications have been submitted for the overall project and for individual elements of it. By the time you read this article I should have nearly completed a sponsored walk from Bristol to Land's End in aid of the project. If there's anyone who would like to sponsor me who hasn't already been approached, there are sponsorship forms in the back of the church, or you can email me at the address shown below.

Chris Kippin, PCC
Secretary, St Mary's Church
thekippins@btinternet.com

Firewood

Seasoned logs, barn dried & ready to burn.

Free local delivery -01584 890993 or 07970878224

Various size loads available



Paul Harding Tree Services



John Brazier & Co

Accountants & Business Advisors

Accounts – Company, Partnership and Sole Trader
Tax Returns – Corporation Tax and Personal
VAT - Returns and advice
Payroll Service including RTI

For a personal and
professional service

Contact John Brazier or Sarah Morgan to discuss your requirements on 01299 271473 or email at info@johnbrazierco.co.uk. Alternatively, you can arrange a meeting at 53, High Street, Cleobury Mortimer, Worcestershire DY14 8DQ

01299 271 473



Bumperscuff Rescue

● Body Shop excellence ● Home convenience

Cost effective car body repairs!

- Bumper scuffs
- Paint scratches
- Kerbed alloy wheels
- Small dents

Free no obligation quotes, all work fully guaranteed Call **Andy Taylor** now on **07834 322216** or visit www.bumperscuffrescue.co.uk

CLEOBURY MORTIMER CARPETS

Supplying and Fitting of:-

- Carpets
- Natural floorings (Cair, Sisal & Seagrass)
- Vinyls

Carpets supplied by: Victoria Carpets, Fibre Flooring
& Alternative Flooring at Unbeatable Prices

Contact Details:-

Address: 26 High Street
Cleobury Mortimer •DY14 8BY
Telephone: H: 01299 270095
M: 07739 186163
Email: garethleach@aol.com
or check out our new website
www.cleoburymortimercarpets.co.uk

INFINITE ELECTRICAL SOLUTIONS

For all your electrical needs:

House rewires

Fuse board upgrades

Electric showers

Need an extra socket or light installed?

No job too small

For a FREE quote

Call Lloyd 01584 811184



FROM THE BANDROOM

Keeping you up to date with news from the Cleobury Mortimer Concert Brass Band.

We started July with Pershore MSB, a great weekend but closely followed by a bout of Covid within the band members, meaning that unfortunately we had to pull out of the Ironbridge Brass Festival.

With everyone fit and well again, we enjoyed playing at a very sunny Neen Savage Fete.

Moving into August we will be playing at Far Forest show on Sunday 14th (a new one for us)

Followed by Shrewsbury Quarry on Sunday 21st

Just a note for any enthusiasts, that the world renowned Cory Band will be playing in St Laurences Church Ludlow on Saturday 24th September – a concert not to be missed ! Tickets available on Cory Band website.

Katie Griffiths

HAVE YOU TRIED?

One of the attractions at the monthly Farmers' Market in the Parish Church is the chance to try something you've not seen before.

The Dairy Door from Wyken, near Much Wenlock had a

range of cheeses on show the last time I was there and spoke to the Preece family, who make Shropshire Artisan Cheese and Fudge. Their St Bartie's brie style cheese tempted me; I love brie made in France, but I will admit this one was as good.

The label says 'Mould Ripened Full Fat Cheese' and told me it was perfect on crackers or melted with bacon and cranberries. That sounds too complicated for my limited cooking ability, so I ate it with a chunk of crusty bread. If Dairy Door are coming back to the market this month I can feel my wallet moving. *JR*

THE ROYAL BRITISH LEGION

We travelled to Wormelow on July 10th to attend the Violette Szabo GC Centenary, delayed from 2021 by COVID.

A parade led by a highland piper, and in part the racehorse Violette Szabo, took us to the Museum. The afternoon honoured and commemorated the life and death of Violette as an SOE agent in World War 2.

During the commemorative service we heard a message from Virginia McKenna, who played Violette in the film "Carve Her Name with Pride", including a recording of the poem "The Love that I have"

which Violette used as a code poem during her service. In addition, Sophie Poldermans, a Dutch author who spoke about her book "Seducing and Killing Nazis" about three Dutch Resistance heroines and Roger Leivers introduced us to his book "Godmanchester at War". Interspersed with these we had contemporary songs from West Midlands based Ruby Ann.

A number of civic dignitaries including mayors from many Herefordshire towns attended and the French army was represented by an officer from the Foreign Legion (Violette's husband's regiment). The event was rounded off by a flypast by a Hurricane and a ribbon-cutting ceremony by Councillor Pauline Akhere George, Mayor of Lambeth, opening a Reading Room which is a new addition to the museum.

The museum opening hours are 11.30am-1pm and 2.30-4pm every Wednesday from April-October or by appointment and full details and history of Violette and the museum can be found on www.violetteszabomuseum.org.uk

Mike Hermolle

CM RBL Chairman

More British Legion news on Page 27. Ed.



Grainger Jones your local financial adviser

Grainger lives in Cleobury Mortimer giving the residents and surrounding areas a dependable financial planning service.

- **Wealth Management**
- **Retirement Planning**
- **Investments & Savings**
- **Family & Business Protection**

An initial consultation is available at no charge

To book an appointment or just have a chat, please contact Grainger below.

tel: 07974 100089

email: grainger@meridenfp.co.uk

website: www.meridenfp.co.uk



TURNERS GATES

bespoke sizes at standard prices



A small family run business specialising in quality wooden gates to suit all entrances.

Visit our website: www.turnersgates.co.uk

Drop us an email: turnersgates@outlook.com

Or give us a call on: 01299 270 965



TIME TO CLEAN YOUR OVEN? LET US DO THE JOB YOU HATE

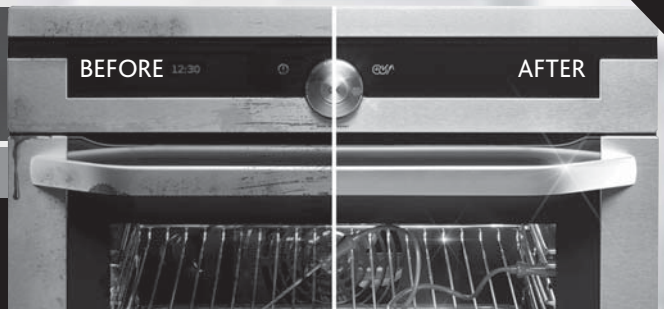
AS SEEN
ON TV

- Ovens
- Filters
- Hobs
- Grills
- BBQs
- Ranges
- Extractors
- Microwaves
- AGAs

Call or go online today for your free estimate

OVENCLEAN
The original oven cleaning specialists

07913 123543
ovenclean.com



Stepping Out! Who's Walking, When and Where.

ROCK PATHFINDERS

The August walking out dates for this popular club. Everyone welcome to these walks which take two to three hours. No dogs allowed.

Thursday 4th, 10.30. Offa's Dyke Heritage Centre, Knighton, Powys LD7 1EW.

(I've walked some of this famous landmark and can highly recommend it. JR)

Thursday 18th, 10.00 Royal Forrester, Callow Hill, Kidderminster DY14 9XW.

www.rockpathfinders.uk or call Alan on 01299 400304.

THE FOOTPATH ASSOCIATION

On July 20th the work party cleared the footpath along the River Rea between Newbridge and Papermills. A popular stretch of the river that quickly gets overgrown during the summer months. The Himalayan Balsam is a problem here as in many parts of the UK particularly along river banks. This invasive plant can grow to over two metres in dense clumps smothering our native plants.

The river helps to spread the seeds so cutting back the plants can help to control the spread.

August 10th and 24th are two dates for your diary if you wish to join the Walking for Health ambles around Cleobury. Meet outside St Mary's Church for a 10.00 am start. The walks last about one hour with the opportunity for a shorter route or slower pace for those that wish it. The finish is at the Market Hall so we can join friends for a drink and cake provided by CoCo.

The attendance was small for the July walk to Milson. The weather may have kept people at home with persistent drizzle. During the walk there was admiration at the new gates installed by Milson & Neen Sollars Parish Council. Sunday August 7th is the date for the next Parish Walk starting at 10.00am outside St Mary's Church.

The Social Walk on July 23rd followed a circular seven mile route from Bewdley to Stourport. The bandstand on the Stourport Meadows was a convenient place for a picnic before the return section of the

walk. The Social Walks continue through the Summer, usually on the last Saturday of the month. For more information please contact CMFA using the email details on the website.

We have relatives from Australia staying. My sister, a keen walker, was very complimentary about the maintenance of the footpaths. Many thanks to the CMFA members and local landowners for their hard work. On a warm Saturday last month we set off to explore A Walk in Three Parishes, CMFA Walk 14. A 4.5 mile route north of Cleobury through local countryside at its best. The grain looked nearly ready for harvest and we were almost dwarfed by a field of broad beans near Common Lane. The brambles along a short section were rather a challenge. I had to use my walking pole to clear the way as I had forgotten to take my secateurs.

CMFA activities are on our website www.cmfa.co.uk and also on Facebook.

Veronica Hargreaves



WINDSOR PRICE REPAIR SHOP
Automotive

Email: mikeytwonames@icloud.com
Tel: 07468 521816

Unit 1, Hillocks Farm,
Cleobury Mortimer, DY14 0EB.

 MOT	 Brakes	 Diagnostic
 Services	 Cam Belts	 Exhausts
 Repairs	 Clutches	 Tyres

Mark Pearce

Landscape, Design and Rustic Garden Furniture

- Fencing
- Patios
- Drives
- Decking
- Garden Sheds
- Summer Houses
- Fence Panels
- Log Stores



And Much More

Top Quality Fully Treated Timber Products

Mobile: 07875425028

Tel: 01746718404

Robert Bradley Logs

07794 798616



*Seasoned Firewood, Hardwood,
Softwood or Mixed loads of logs.
Free Local Delivery*



Fresh milk and cream from
Cleobury Mortimer

www.mawleytownfarm.co.uk

01299 270359



SKELLERNS

DOORS & WINDOWS



- UPVC Fascias & Guttering
- UPVC Windows, Doors & Conservatories
- General Home Improvements
- Re-roofing & general building work
- Replacement Glass
- Patio Jet Washing



Free No-Obligation quote. FENSA registered company with years of experience

Call Mike on: 01886 812250 or mobile: 07814 577739

www.skellersndoorsandwindows.co.uk



The school summer holidays were always a happy, carefree time in my childhood. I was content to play in the garden: generally something involving mud, dens and bows and arrows! I would have loved to have some open country on my doorstep instead of miles of suburbia.

This month I expect to see family groups out enjoying the forest on foot and bicycle. The huge increase in visits during the lockdowns of 2020 and 2021 has calmed down but many people have continued to use their newly-discovered local countryside, and it's very good to see. The public footpaths are there for everyone, while cyclists and horse riders are limited to bridleways. There are a number of concessionary paths too in the forest, where landowners have given limited permission, and there is a general right of access on all land owned by the Forestry Commission and Natural England although it's preferable to use marked trails for safety and to avoid disturbance to sensitive wildlife. The Guild of St. George's woods in 'Ruskin Land', on the Bewdley side of the forest, are private but crossed by a few public footpaths (but no bridleways) and the use of the major tracks by walkers is accepted.



This year six new interpretation boards have been erected at points of interest along the paths to help people to appreciate the history and wildlife of the area. One of these just south of Uncllys Farm is shown in the photo.

Of course these articles have to be written well before the month in question, so I have no idea what the weather will be doing by the time you read this. Will the countryside be recovering from the drought and high temperatures of July? Will water be rationed and the forest streams reduced to a feeble trickle between connecting pools? Or could we even be experiencing flash flooding due to heavy downpours of rain? Both lack of water and too much water cause problems for wild creatures as well as us. Desperate for water, animals can look for unfamiliar sources and eat juicy leaves or fruits normally untouched. The leaves and green apples in our orchards attract deer, wasps, hornets and flies, especially so in dry weather. Pools and garden bird baths become vital not only for birds but for bees and all manner of flying and creeping creatures. (If you put out a dish of water put some pebbles in too to help insects etc. gain access). In flooding conditions stream-dwelling creatures can get washed out of their usual habitats. Silt and stones are carried along and water courses are re-shaped. Flying insects and birds have to shelter from heavy rain and may be unable to feed. Sustained flooding will fill the air spaces in soil and kill plants and soil organisms. I hope that nature will be kind to us as and give us moderation this month!

Linda Iles

BILL'S QUALITY METALWORK
5 GREENFIELD ROAD, CRAVEN ARMS, SY7 9QU
Manufacturing Made to Measure Gates and Railings
~Balconies and Staircases, Handrails, Carports,
Structural Steelwork and Mobile Welding Service.
Phone Bill on 07973 248 016 or 01588 673 914
Office for a free quote



Heath Farm Meats, Bagginswood

Opening Hours

Wed 8am to 5.30pm, Thurs 8am to 7pm, Fri 8am to 5.30pm, Sat 8am to 12.30pm

Straight from Our Farm to Table

We rear & sell all our own beef, pork, lamb & mutton through our shop on farm. We also make our own flavoured sausages, burgers, home cured bacon, gammon etc. No order to large or small.

Hams ● All Poultry ● Honey ● Mawley Milk & Cream ● Ashley's Cakes & Bread ● Jams ● Eggs ● Cheeses ● Apple Juice ● Potatoes ● Meat Pies ● Sticks & Logs

Telephone 01746 718732 with your order to arrange a date & time for collection



Electrical & Security

Tel: 07973 112463 (Anytime)

01299 489223



- | | | |
|---|---|---|
| <ul style="list-style-type: none"> • Full/ Part Installations • Existing System Updates • Alarm & Security Systems • PAT Testing • Domestic and Commercial Properties • Electrical Problems | <ul style="list-style-type: none"> • Landlords & Electrical Safety Certification • Upgrades • Free Callouts and Quotes • For Existing and New Installations and Security. | <p>Part P + Full Scope Registration</p> <p>Card Payments Accepted</p> |
|---|---|---|



Fast Friendly Service, No Job Too Small



FOR ALL YOUR ACCOUNTANCY REQUIREMENTS

www.fairway-accountants.co.uk

Head Office: 01299 822283
team@fairway-net.co.uk

Simon Hector: 07896 439594
sjh@fairway-net.co.uk



Philip Dunne's Letter from Westminster

Let's make the most of the Summer ahead

With the school holidays now upon us and a recent spate of scorching temperatures, many families will be looking forward to spending time with loved ones in the first 'normal' summer for two years.

Covid restrictions are now behind us. Tourists are back in Shropshire. Holidays abroad have been made possible once again. Many constituents are enjoying the benefits of a well-earned break in the sun, a staycation soaking up the best that the British Isles have to offer, or jetting off on a short flight abroad.

This summer will also see the return of many local events that have been sorely missed during the pandemic, forced to cancel during lockdowns of 2020 and 2021.

Our local venues have now sprung back into action and the hospitality sector will be hoping for a busy summer with beer gardens full to the brim. I would encourage those who are able to make the most of the assets on our doorstep and support our local pubs, restaurants, theatres, and arts centres.

In April, I enjoyed taking my family to Bitterley Point-to-Point for the first time in three years, and I am particularly looking forward to the return of the Burwarton Show on 4th August and Tenbury Countryside Show in Burford on 6th August. Each year, thousands of visitors come to both shows, showcasing Shropshire's proud agricultural reputation and rich farming history.

I know that Cleobury Mortimer residents enjoyed another successful Festival at the Edge recently, and that Broseley celebrated the return of its Festival earlier in June. Hundreds of dog owners had the opportunity to show-off their pets once again at the very popular Ludlow Fun Dog Day at Stokesay Court.

Bridgnorth made the most of the Queen's Baton Relay ahead of the Commonwealth Games passing from the Severn Valley Railway through the town to join the Community Sports Day on Saturday before the Games began in Birmingham

The Church Stretton Arts Festival returns from 23rd July to 13th August, featuring performing arts from classical and contemporary music concerts to drama, speakers and workshops. The festival is exhibiting over a hundred local artists.

In Craven Arms, there are a whole host of summer holiday activities on offer to keep school children entertained at the Discovery Centre – our very own gateway to the Marches.

There are many more fantastic events coming up than the few I have space to mention here. We are lucky to have such a rich and diverse cultural scene in South Shropshire and I look forward to enjoying much that the county has to offer this summer.

As the Houses of Parliament rose for the summer recess last week, after a tumultuous couple of months, colleagues will be looking forward to a break from Westminster. I am equally sure most constituents will be heartily glad of a break from politics too.

Over the summer months, the Conservative Party will select a new Leader who will become the next Prime Minister from 5th September.

This summer will mark the end of an extraordinary period in our political history but also offers the chance for a fresh start in September.

We have lots to look forward to!

Rt Hon Philip Dunne MP

Do you suffer from heat loss, outside noise or draughty windows like many older properties?

**Bespoke
Secondary
Glazing**

Secondary glazing from Lansec greatly reduces draughts and heat loss while retaining the traditional appearance of your original windows

- **Recommended** by Historic England for heritage and Grade 2 listed buildings
- **Barely visible** from inside or outside
- **Colour matched** to your existing windows
- **10 year** material and labour guarantee
- **Local**, family run business



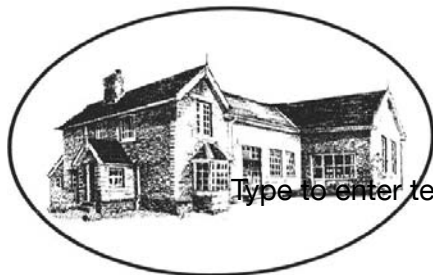
01299 544013
lansecglz.co.uk

Unit 4 Blackmanstitch, Long Bank, Bewdley, Worcs DY12 2QW



Bayton Church of England Primary School

- Be the best you can be, as a child of God -



Type to enter text

www.baytonceprimary.co.uk
01299 832393
office@baytonpri.worcs.sch.uk

Call or email to book an appointment to visit our school and meet our staff.

"We offer an alternative and unique Primary School experience, in an idyllic rural setting. A small family-orientated school with a caring ethos and traditional values, coupled with excellent results. If you want the very best for your child, come and visit us."

*Ms. Jolanda Simmonds
Head Teacher*

**Spaces currently in Years 4, 5 & 6, and we are also welcoming Parents & Carers of September 2019 intake.
Governor vacancies – please call for information**

Rated "Outstanding" in our latest SIAMs inspection (March 2018).

Friendship – Hope – Perseverance – Compassion – Trust – Forgiveness – Responsibility – Respect – Truthfulness

Our school vision: We aim for everyone to be a part of our community, be life-long learners who are confident, enthusiastic, valued and reach their God given full potential.



MORE BRITISH LEGION NEWS

A trip is being organised by the Cleobury Mortimer Royal British Legion to the Morgan Factory in Malvern on Thursday August 25th. The cost will be about £45 per head, the exact amount depending on how many wish to come. Please advise Mark Baldwin (270110) or Mike Hermolle (271384) if you would like to join us. The factory tour is completely accessible, and the trip is open to non-members. *Mike Hermolle*

VOLUNTEERS' FAIR

11.00 to 1.00pm Saturday,
September 10th in the
Market Hall.

Many of our voluntary organisation which provide activities for all ages for the Cleobury Mortimer area are in need of some help to keep these groups running.

If you have some spare time and some of the skills we know are out there, please come and talk to us and help keep our organisations going.

We especially need help with our young people to offer activities locally as our shortage of public transport limits their access to

activities. Come and have a chat with us on Saturday 10th, look forward to meeting you.

Madge Shineton.

Cleobury Youth Partnership.
01299 271186.

Madge.shineton1@gmail.com

LLOYDS BANK

LAUGHS

Please let us have your Lloyds Bank stories to keep a grin going from now until they close. Here's one from the editor:

Years ago I worked from a small office that was behind our garage. Looking out from the back window I could see the Lloyds Bank building; we could have waved at one another if we wanted to.

Dealing with a minor money matter, I needed some information quickly and put in a call to the bank rather than spend time walking round to the High Street and joining the queue. But those were the days when the bank had a central answering point somewhere in the Black Country and all calls went through there.

"Could you put me through to Cleobury Mortimer branch, please," I asked the lady who answered the call and then put me through one

of those security checks they were so fond of.

After some minutes of vital information exchanges, like "What colour did your maternal grandmother paint her toenails?" I was feeling that a gentle stroll to the High Street would have been quicker. Then came breakthrough: "May I ask you the reason for your call, Mr Reynolds?" asked my interrogator.

By this time my patience was wearing very thin. "Yes, I want to enquire about raising finance to purchase two nuclear submarines from Vladivostok," I replied.

"I'll put you through," was the prompt reply and within a minute a giggling Sylvia Luff was on the line, asking what I'd said to the central operator. When I explained Sylvia told me "She said you sounded very serious so she put you through." Good stuff, this security.

SILLY BITS

Went to the cemetery to lay some flowers and noticed four grave diggers walking about with a coffin. Three hours later they were still walking. Thought to myself "They've lost the plot."

Statistically 6 out of 7 dwarfs are not Happy.

No.19
The Beauty Room
with Jane Weaver


No.19 The Beauty Room

Wash away the aches, pains and stress of everyday life by indulging in a relaxing Swedish massage, any combination of back, shoulder, neck, arms and legs, ½, ¾, 1 or 1½ hrs, or treat yourself to a manicure/pedicure, waxing or tinting.

Telephone consultations available to discuss any personal requirements, treatments available at No.19 or in your own home.
Contact Jane on 07968 582269 or email 19thebeautyroom@gmail.com

Just like the lotus flower we too have the ability to rise from the mud, bloom out of the darkness and radiate into the world!



Soft furnishing and
Interior Design Services


Masquerade
Fabrics Limited

01299 271 680
36 High Street Cleobury Mortimer near Kidderminster
Worcestershire DY14 8DQ

Retailers for Sanderson, Harlequin, Monkwel
Crowson and many more...

Comprehensive design, measuring and fitting service.



The Lamp Restaurant

15a High Street, Cleobury Mortimer, Shropshire, DY14 8DG

01299 272785 or 01299 271313

Fully Licenced and Air Conditioned

Serving Bangladeshi & Indian Cuisine



The Lamp Restaurant winner of Currylife award chef of the Year

Open 7 days a week from 6.00pm until 11.00pm

The Lamp's cuisine, inspired by Sylhet, the second city of Bangladesh, offers a wide variety of choice along with established favourite dishes and a selection of Chef's Specials.

The wide variety of starters and accompaniments chosen by our chef to complement your main course.

Takeaway service offers free delivery up to 3 miles for orders over £15.00.

Find us on Facebook: Lamp Inn Cleobury Mortimer



Michael Coombes Roofing & Building Maintenance.

Complete Re-roofing, Roof repairs, Pointing & Chimney repairs.

Slabbing & Brick work

Wall & Floor Tiling

Painting & Decorating

Over 20 Years experience in the Cleobury area.

Call Michael on 07854 047413

APSupplies

- ◆ Specialists in equestrian and field maintenance
- ◆ Haylage, hay and straw supplied
- ◆ From chain harrowing to mowing and baling
- ◆ Fencing to ménage maintenance
- ◆ Woodland management and coppicing
- ◆ Concrete pads and sheds all at competitive rates

APSupplies.....Call today for a chat !



Ant Harman: 07779239393

The Festival At The Edge

It was a good event last year; even better this time. We knew roughly what to expect and it came over well, with extras to add to the weekend. On Saturday morning, the queue of parents, friends and the simply curious were waiting outside the marquee while the children from Farlow C of E Primary School did sound checks and then sat quietly waiting for their curtain call for 'Letters Through Time' and the story of Simon Evans.



Maria Credall did a remarkable job in researching Simon Evans' personal history, writing the play that she shared with the children and leading them through its first public performance. Our report on the trial run at Farlow Village Hall praised them and their ability to remember lines. This public debut for both author and the young supporting cast excelled. At the end, the audience in the crowded marquee gave them a well deserved standing ovation. In a word? Brilliant.

This was just one attraction in a wide spread event that justified a presence very day. It took a while to trace Genevieve Tudor, Radio Shropshire personality and gently spoken

organiser behind this addition to notable Shropshire festivals. She introduced me to Professor Panic of the Panic Family Circus, where you could learn circus tricks and skills. One young lady was strapped into short stilts and carefully taught to walk around; from novice to walking a circle in one lesson was pretty darned impressive.



This young lady - primary school age, at a guess - learned to stilt walk over sticks before completing a circle. In about 30 minutes - remarkable.

Story telling is a major feature of the festival, with several sessions on offer at the same time. I stopped for some time to hear Peter Chand and Cath Little telling short tales turn and turn about, to much laughter and applause. Good stuff.



With my belly dancing interest on a visit to distant family, I thought it only right to watch Seven Sisters from Shrewsbury in action, even though they could only muster five dancers. More formally dressed than we are used to, they looked very glamorous and cool in their co-ordinated movements. A further education in the matter of this traditional dance form.



Just five of the Seven Sisters from Shrewsbury performed, but they still impressed.

It was natural that with trade stalls one could easily spend. A much smarter laundry basket made of Senegalese grass now graces my apartment and the lady in my life wears a bracelet and a wire necklace brought south from Leeds. My final spend was on a mushroom extract that I'm told is good if you've had radio therapy treatment. We'll see.

By Cleobury standards this was a big event, but it's small and friendly compared with others. Talking to one trader, she appreciated that her rent was a percentage of her sales; the next festival she was booked into was a much grander affair and her cost was going to be close to £1,000! If you're a part time trader - which some of these people were - you will naturally go for the small, friendly and affordable events. Here's to next year.



Purrfect Cattery

Comfortable and spacious pens for single or double occupancy
fully licenced by Shropshire Council

visit our website: www.purrfectcattery.co.uk

Contact us on: 01299 270565 or mobile: 07968 111415

Or email: enquiries@purrfectcattery.co.uk

TIRED OF THE SAME OLD BEER?

We've all been there, you've just got home and there is no beer in the fridge. You contemplate popping to the nearest shop* and then you remember all they stock is Fosters, Carlsberg and some manky looking white cider that hasn't even seen an apple.

Don't worry, we are here for you!

The UK's freshest craft beer subscription service is now live, delivering amazing beer from the UK's best independent breweries to your door. You can choose to join the club and get a case of hand selected beers once a month or just buy the one case as a one-off.

BECAUSE Life is too short for Sh*t Beer

*Please note this is not implying any of your local shops have a poor range of beer. Its is a generic statement used for marketing purposes. I imagine your shop probably has nice beer.



Take your fancy smart phone out and scan this QR code. The magic of the internet will unfold right in front of your eyes. Here you can register for more updates, discount codes and ace competitions.



HOBSONS

BREWERY CO.



In need of a beer top-up?
Shop Hobsons beers online

www.hobsons-brewery.co.uk

Delivery available direct to your door if you order online, or call us if you would prefer to collect from the brewery.

Available online:
Cases of bottles (12x500ml)
Try our case builder - mix and match your choice of 12 bottles.

Polypins (beer in box)
10 Litre approx. 18 pints
20 Litre approx. 36 pints

+ a range of Hobsons gift packs and more!



www.hobsons-brewery.co.uk

☎ 01299 270837

✉ beer@hobsons-brewery.co.uk



Remember to follow us

Doddington Lodge Post

VILLAGE COUNTRY FAIR AT DODDINGTON LODGE



The Doddington Lodge Village Country Fair was a fun day of celebrations, bringing the local community, friends & family together. A special thank you to everyone that came along and supported us. With your generosity we raised an amazing £1100, which will be going to The Cleobury Mortimer & District Community First Responders, St John's, Doddington Church & The Doddington Lodge Residents Fund. Thank you to the Knit & Natter of Bridgenorth & Tenbury, The Plough, Spice Empire, Co-op. Paul 'Chuckle' Roberts 80's Disco & Shredbelly for keeping the music flowing. Just Blooms of Clee Hill for the beautiful flower arrangements, Bound with Love Quilt Company, Andrew Francis Butchers, Bewdley Farm Shop and Flush Away for the portable toilet, and of course, all the Doddington Lodge Team that worked so hard to make it such a success!



www.doddingtonlodge.com | E: enquiries@doddingtonlodge.com | T: 01584 707084



Doddington Lodge

Residential Care Home

Living with us

at Doddington Lodge

Care and Warmth at its Heart

...ould like to welcome you and your family to Doddington Lodge, our newly renovated, privately owned residential and dementia care home in this historic, tranquil hamlet of Doddington, Nr Cleobury Mortimer. Located on the beautiful Shropshire & Shropshire border, providing stunning views from every aspect of our home.

...a modern bistro dining room and bar with a delicious daily menu created by our accomplished chefs. Individually designed spacious double rooms, allowing couples to stay together or beautiful single rooms all with en-suites and stunning countryside views. Even a hairdressing salon for a little pampering to provide a place of well-being.

Doddington Lodge is a place where friendships are made and special moments are shared. We organise many fun activities that everyone can get involved with, whether that's a sing along, arts and crafts, collecting fresh veg from the allotment or just simply helping each other with a crossword in our daily newspaper. Each day is different, we certainly have many happy moments...

Our home is a loving community and family, where you can consider Doddington Lodge a home away from home. We will provide you with all the key information, guiding you through every step of the process, whether you are staying with us for a short or long stay.



Royal Ascot Ladies Day comes to Doddington Lodge



A very special visit from DML Racing, Worcester

"There is such a lovely atmosphere & many friendships made. Every step is taken to make each day enjoyable and for everyone to get involved with the activities."



"I began working at Doddington Lodge over two years ago & what an amazing place to work, a beautiful home with great carers and management, lots of investment has gone into making it into such a wonderful place. Doddington is like my family and I will be forever grateful for having an opportunity to work here x."
Georgie - Deputy Manager



Join our team

and make a real difference...

Becoming part of the Doddington Lodge family is really something special. Our team is built on a shared purpose, to provide outstanding care for our residents and support for loved ones. We invest in our team members, helping them progress and develop within their roles and career path. More than ever we are looking for the right individuals who can really make a difference. If you believe you have the right skills please email your CV to: enquiries@doddingtonlodge.com or visit www.doddingtonlodge.co.uk/careers.

Current Vacancies

- CHEF/COOK
- SENIOR CARERS
- CARE ASSISTANTS
- NIGHT CARERS

To apply please send your CV to enquiries@doddingtonlodge.com

www.doddingtonlodge.com | E: enquiries@doddingtonlodge.com | T: 01584 707084

Doddington Lodge, Residential Care Home, Doddington, Nr Cleobury Mortimer, Shropshire DY14 0HJ.



Remember to follow us

CARTER'S ANTIQUES



We are looking to purchase all manner of antiques, jewellery, coins, medals and curiosities.

For a free valuations kindly telephone
John Carter: 07779 311792
 Or email: johnbarney743@gmail.com

SINGING LESSONS

Professional singer and experienced teacher recently moved to this area
 Vacancies available

All styles, ages, standards welcome
 Contact Angela Kazimierczuk on
 07870 506655



Natalie Taylor Dip CFHP MPS Pract.

Specialist Foot Health Practitioner

Specialising in:-

- In-growing toenails
- Fungal infections
- Nail trimming
- Verrucae
- Calluses
- Corns

All from the comfort of your own home.

If you would like to make an appointment, please call on **07779 113982** or **01584 890112**



COUNTRY SKILLS

CPCS/NPTC Approved—fully insured

- Outside Renovation
- Tree Surgery, Hard Landscaping
- Slabbing and Fencing
- Decking, Roofing
- Contract Mowing

Call for a free quotation

R. Price & Sons

Mobile: 07967 140720 Email: roger@country-skills.co.uk

Painter/Decorator Christine Smith

Friendly, local, female professional. Any job considered: including Indoor/outdoor, walls, windows and doors, wallpaper & preparation. DBS checked. Fairly priced. Free quotes.

Call: 07977296335

E: clsartcontact@gmail.com



Precious Memories

Funeral Celebrant - Carole Clayton

07971 543790— 01584 890007

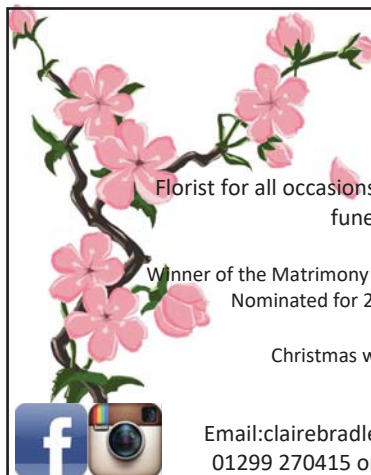
South Shropshire - North Herefordshire - North Worcestershire

Celebrant@preciousmemoriescelebrant.net

www.preciousmemoriescelebrant.net

FB: @preciousmemoriescelebrant

Everyone has a story to tell—I'd be honoured to be the one to tell the story of your Loved One.



Claire Bradley
Floral Designs

Florist for all occasions, specialising in wedding and funeral flowers

Winner of the Matrimony Award 2020 Best Wedding Florist
 Nominated for 2021 Matrimony Awards

Christmas workshops available



Email: clairebradley1@icloud.com
 01299 270415 or 07980 580770



Domestic oil-fired boiler breakdown & maintenance services.

27 years' field-service experience with leading UK boiler manufacturer Worcester Bosch.

Donovan Taylor

Tel: 01299 828670 or 07807 837040

donovan.taylor@sky.com

www.greenstar-boiler-repairs.com

Caring about your environment and providing an honest, professional & reliable service you can trust



A small local business.

I am a qualified lawyer with over 30 years experience offering a personal and approachable service.

I undertake specialist will drafting, lasting powers of attorney, deputyship applications and probate.

"I've used Mandy at Westons Wills and Probate numerous times over recent years covering all aspects of her expertise. Her guidance on the way forward and solutions to issues that she has suggested has been excellent. She is extremely communicative and responsive, and handles difficult situations with compassion and empathy. I have happily and confidently recommended her services to everyone I know that would benefit from her services."

"Mandy Weston of Westons Wills and Probate is a very professional and knowledgeable person. She has now become my 'go to' legal adviser and has taken on many legal tasks for me and my family. Wills, Probate, Inheritance Tax and Powers of Attorney. I trust her judgement and experience to act in mine and my family's best interest. I would highly recommend her legal services to anyone."



Contact me today

"Great expertise and a friendly professional manner"



Contact Mandy Weston Phone 01299 405873 Mobile 07931 411733

Email mandy@westonswillsandprobate.co.uk **Website** www.westonswillsandprobate.co.uk

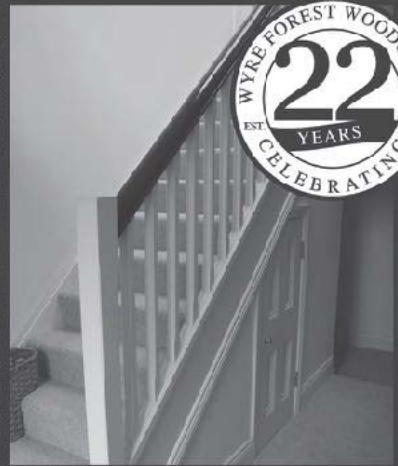
Address The Old Snuff Mill Warehouse, Park Lane, Bewdley, Worcestershire DY12 2EL



**WYRE FOREST
WOODCRAFT**
purpose made joinery

**Specialists in the Manufacture
of Purpose Made Joinery**

- Tailor Made Timber Windows
- Traditional and Contemporary Style Timber Doors
- Custom Made Staircases
- Bespoke Conservatories
- Made to Measure Gates




TO SEE EXAMPLES OF OUR FULLY FACTORY FINISHED JOINERY VISIT OUR WORKSHOPS AND SHOWROOM

www.wyreforestwoodcraft.co.uk

01562 68100 | enquiry@wyreforestwoodcraft.co.uk

Oldington Lane | Firs Ind Est | Kidderminster | Worcestershire | DY11 7QN

IRENA S.A.C DIP. (DIST). N.C.F.E. M.C.F.H.P.
FOOT HEALTH CARE PRACTITIONER




All your foot problems dealt with:-

- Foot health check • Verrucas etc.
- Corns • Medical Manicure
- Callus • Medical Pedicure

Free vascular Doppler Check of your feet

The Old Farmhouse
Button Bridge, nr Bewdley
DY12 3AW



Mobile visits available
01299 841 277
hessins@gmail.com

Paul Harding  **Tree Services**

- Tree surgery and felling
- Woodland thinning & maintenance
- Hedge trimming & grass cutting
- Supplier of hardwood logs, kindling and garden bark

•NPTC certified fully insured. Domestic and commercial work undertaken.
Tel 01584 890 993 Mob 07970 878 224

Hollywaste Holiday Lets

Our 2 bedroom (ensuite) cottage, sleeps up to 6 adults, situated in Hollywaste, Cleobury Mortimer. Fully equipped kitchen, open plan living room with log burner, dining area and downstairs WC. Includes Freesat and fast WiFi. There are enclosed & open decking areas outside, to take advantage of the beautiful countryside views, and a grassed area for outdoor games. Open all year round and welcomes adults, children, 1 large dog or up to 2 small dogs

Discount of 10% available for locals simply quote "keepitlocal" at the checkout

Events we can accommodate:
Staycations, Pamper weekends, Shooting weekends, Wedding venue, Minimoon stays, Stargazing weekends, Cookery weekends & events, Camping and caravan pitches are also available!
If you're interested in hiring our space or land for any event and time frame.

Tel: 07962 151322 Email: hollywasteholidaylets@gmail.com FB: <https://www.facebook.com/HollywasteHolidayCottage>
Website: <https://hollywasteholidaylets.squarespace.com> for more information

 **Kingfisher Crafts**
Sally Serrell-Cooke
07890 721657 | kingfishercrafts299@gmail.com
Visit me on Etsy and Instagram: **KingfisherCrafts299**



New Baby Hampers (Travel Changing Mat, Bibs, Nursing Towels, Quillow) *
Placemat Sets * Wine Gift Bags *
Cafetiere Jackets * Festive Gifts

THE LACON CHILDE SCHOOL FETE

This event saw the habit of school fetes at Lacon Childe revived. My son assures me they were regular happenings in the 1980s, so it's very good to see them back.

Whatever, on July 7th the sun shone and the school playing fields were looking very busy, with a tug-of-war diverting people around sweating lads, all determined to topple their opponents. Don't ask me who won or which teams were competing - it just looked like fun.



Further on, the more gentle business of jumping around in a brightly coloured bouncy castle occupied younger children and kept them happy. Lots of energy expended, but no bumping or boring that might frighten the youngest.



Nearby, the queue at Pizza Girls' Wood Burning Pizza oven was kept busy, cool cans keeping the customers happy as they waited. Running the bright pink coloured cooker did not look like much fun; you can only hope they took enough money to make them happy at the 7.00pm closing time.

There was a tombola. Of course there was a tombola; can you imagine a school fete without one? I was about to head for home and decided to have a modest flutter, possibly because of Camilla's persuasive ways. Imagine my surprise when the fiver I spent brought in every last winning ticket! Embarrassed at cleaning the prize table out, I left two bottles and brought two home - quite enough.

HOPTON WAFERS PRIMARY REUNION

A lovely afternoon was had at Hopton Wafers Village Hall on July 10th. Just over 40 people came along for an afternoon tea to reminisce about life at Hopton Wafers C of E Primary School, which closed in July 2012. We had a mix of past pupils, (some with their own children), staff, parents, governors, and friends of the School plus Hopton Bear, the school Mascot, attending the event organized by Mrs Sian Hawes who was the last Head Teacher. Thank you to everybody who came and brought lots of delicious food to share.



You can probably guess who this is - Hopton Bear himself, a proud representative of the village school



CARDS, GIFTS, HOMEWARE, HARDWARE AND EVERYDAY ESSENTIALS!

Friendly Staff, and a great range of stock with prices to match!

If you need it, and you want it! We've probably got it!

Pop inside before you pop online!

18 High Street, Cleobury Mortimer

Tel: 01299 489590

Email: cleoburrs.onthehighstreet@gmail.com

Like our Facebook page CLEOBURRS

Keep up to date with the latest products!



GW

Tree Stump Removal

Commercial and residential.

Fully insured, qualified and professional.

Your property left neat and tidy.

Happy to give quotes with no obligation.

Ring Sam: 07787095668 or 01299832549

Email: sam@gwstumpremoval.co.uk

Rachel Siddall

DipCFHP, MPSPract

Footcare in the privacy of your own

home:

Nail trimming
Ingrowing toenails
Corn removal
Thickening nails
Callus reduction
Verruca treatment
Diabetic foot care



07478 007913



Hobbs Building Services

EST 25Years.

A Total Plastering, Maintenance and Building Service for your home,
business and outbuildings.

Insurance work undertaken

Emergency call out service for general plumbing, roofing, boarding up damaged doors and
windows. For a free quote please call;

Ian on; 07967190742

Email: hobbsbuildingservice@yahoo.co.uk Or Call/Text Kelly on; 07790085307



Cleobury Mortimer Benefice Church services throughout the Benefice in August

St Mary's Cleobury Mortimer

Sunday 7th August – 10.00am Family Eucharist
Sunday 14th August – 8.30am and 10.00am Eucharist
Sunday 21st August – 10.00am Benefice Eucharist
Sunday 28th August – 10.00am Eucharist

St John the Baptist, Doddington

Sunday 7th August – 11.00am Eucharist

St Michael and All Angels', Hopton Wafers

Sunday 7th August - 9.30am Eucharist

St John the Baptist, Kinlet

Sunday 14th August – 11.15.am Eucharist BCP
Sunday 28th August – 6.00pm Evening Prayer BCP

St George's, Milson

Sunday 7th August – 6.00pm Evening Prayer

St Mary's, Neen Savage

Sunday 7th August – 6.00pm Evening Prayer BCP

All Saints', Neen Sollars

Sunday 7th August – 11.00am Village Worship
Sunday 14th August – 11.00am Eucharist
Sunday 21st August - 11.00am Village Worship
Sunday 28th August – 11.00am Village Worship



'Drop in at St Mary's' - every Thursday, 10.00-11.30am

- for coffee and a chat, if you are feeling lonely and confused, have lost the confidence to go out or have no-one to talk to. If you have problems and are struggling to sort them out or just wish to have a quiet place to sit. This opportunity is free and provides a peaceful environment to sit in the company of others and listen and talk if you wish to.

The Church Office is open Tuesday and Thursday from 9.00am-3.00pm
Contact details: Grace Johnson cleoburychurch@hotmail.com
Tel: 01299 272916

Cleobury Opticians

NHS & private eye tests ♦ FREE children's glasses

FREE NHS glasses ♦ Home visits



Opening Times-	
Tuesday	9am-1pm 2pm-5pm
Wednesday	9am-1pm 2pm-5pm
Thursday	9am-1pm 2pm-5pm
Friday	10am-2pm
Saturday	9am-1pm

www.cleoburopticians.co.uk

16 Church Street, Cleobury Mortimer, Kidderminster
DY14 8BX

Tel: 01299 270012

Email: cleoburopticians@outlook.com



All Aspects of carpentry work undertaken

Level 3 City & Guilds in Carpentry & Joinery, 20 years of experience

Tel: 07854 032750

Email: duncpearce1@gmail.com

Stewart Mumford Architectural Services Bespoke Architecture

Great value personal service backed up with extensive local knowledge, established links with other construction professionals to ensure comprehensive packages specifically tailored to individual needs.

Initial consultation free of charge.

Specialist in Works to Listed Buildings, Affordable Houses, Open Market Houses, House Extension and Alteration, Barn Conversion and Commercial Projects.



T: 01299 271068

M: 07977 921039

E: office@stewartmumford.co.uk

Simon Morton - Not in the Garden.

"I'm taking a month off work to walk a stretch of the South West Coast path - fancy joining me for a few days?" asked one of my oldest and dearest friends.

What a stupid question. Why would I possibly want to put myself and my underperforming body through something as gruelling as that? Of course, that *should* have been my response; however, at that very moment, I had a pint in my hand. And a few empty ones on the pub table in front of me. Bonhomie can quickly paint you into a corner if you're not careful.

The other reason for pushing common sense aside was that I'd recently finished reading *The Salt Path*, a book about a down-on-their-luck couple who, in the absence of anything else to do, decided to walk the entire 630-mile trail. Despite the laboured moaning of the author, my interest in the path and the adventures therein had been piqued.

And the final reason for abandoning logic and practicality is that I quite fancy myself as the rambling type. I own a pair of walking boots, have a working knowledge of Dubbin wax, and both my children have got Bronze DoE awards. Based on this admittedly scant list of qualifications, I felt more than qualified to take on whatever the stretch of the path between Plymouth and Mevagissey could throw at me.

"Yep! Count me in! I'm sure I can wangle a five-day pass", came my enthusiastic answer as I signalled to the barkeep for another frothing pint of whatever had got me into such an adventurous mood.

In short succession, maps were collated, cosy-looking B&Bs were booked, and boots were duly dubbed - I was ready. Or at least I thought I was.

What a fool I was. A crazy, naive, innocent fool.

The thing is, walks like this are hard. *Really* hard. The South West Coast Path is best

described as a rollercoaster that, at least in parts, should have been condemned years ago:

The '*rollercoaster*' bit is self-explanatory - it is VERY up and down. The best way I can describe it is when you pop upstairs to get something, completely forget why you went upstairs (is that just me?) and go back down to the ground floor again. Now repeat this all day. For four days.

The '*should be condemned*' bit alludes to the fact that coastal paths are apparently not high on the Health & Safety agenda - sheer drops on the side of a very narrow path were an all too regular feature. Unfortunately, my friend - the daft sod whose idea this was in the first place - suffers from vertigo and, let the record state, I'm not immune to wobbly legs at certain heights either. This made the '*Health & Safety be damned*' sections slow, challenging and a tiny bit teary. Our heightened sense of impending doom wasn't helped when the local evening news led with a story of a walker who had been airlifted to hospital after falling off said path. Super.

Despite all of the above, it was a remarkable/gobsmacking/brilliant/life-affirming trip. Amazing views, friendly people and beautiful harbours were very much the order of the day.

Exhausting? Yes - just shy of 70 miles over the four days of walking.

Exhilarating? Damn right - the equivalent of 391 flights climbed.

Thirst generating? But of course - for some reason, the stat relating to 'righteous pints' consumed seems to have been misplaced.

And, most worrying of all, it's left me with an urge to do it again. I'm currently eyeing up the Coast-to-Coast path or maybe even Offa's Dyke. Either way, it looks like I'm going to need more dubbin.

Simon Morton

Bespoke framing and mounting for:

- Artwork
- Photographs
- Canvases



**The Framing Studio
Cleobury Mortimer**

Paul Serrell-Cooke
07791 378240

Bringing artwork and images to life



**Quality
firewood
for sale**

We source our wood from a reputable and sustainable source.

We advise customers to always buy well in advance of the next winter season. This allows further drying to get the wood to an optimum level.

Can deliver up to 20 mile radius from Bayton (DY14 9NA).

We can do multiple and large loads. Please call to enquire on pricing.

John Edwards 07531025018



H.C.P.C Number CH22527

**Cleobury Chiropody
Janet Manley**

Qualified Chiropodist
MSSCh. MBChA
BSYA (reflex) REIKI Master

Tele:- 01299-272841
Mob:- 07805-268439

Email: janetpmanley@yahoo.co.uk

2, Tenbury Road,
Cleobury Mortimer,
Kidderminster,
Worcs.
DY14 8RB

A Round Of Appaws

Professional Dog Groomer
C&G Levels 2 & 3 Diploma

Fully Insured

Call or text Jules on
07368359144

aroundofappaws1@gmail.com



**A. Farr Painting &
Decorating**

Give your home a beautiful new look....

Contact:

andyfarr12345@gmail.com 07815 855340

Lisa Steward Ironing services

Hopton Wafers



Please call: 07581065436 for more information

Carole Clayton - Funeral Celebrant

Carole Clayton has worked in a wide variety of jobs since her teens, but when she reminisces it becomes clear that she was learning whatever craft was needed in each post. From serving behind the bar and doing much more than pour the drinks. Like collecting glasses, wiping down tables, emptying ash trays and having a Guinness-drinking party's next round under way to be sure the slow pourer from Dublin was ready when they called. A thinker, even in her teens.

She's sold advertising very effectively, but admits calling twice to get the money in did become a bind. She was doing work for Hoskins' Funerals Direct of Worcester and when the chance came to join the company as a director, she bought in and also started her own independent business as Precious Memories in 2021, after completing her training as a funeral celebrant. That meant 20 hours of studying and learning how to compose a eulogy, firstly for herself and then for her training partner. Put together, read out and then subject to criticism

by others on the course. It's no surprise that she passed, with her background in selling and just listening to find out in detail what customers wanted.

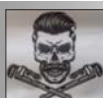
As a celebrant she sits and talks to grieving family members to learn about the life and interests of the one they are mourning. If they had a religious belief, that will be recognised and included in the life story Carole will tell at the final ceremony before the loved one is passed on in whatever method the family prefer: burial, cremation, interment of ashes or a memorial service.

The time and trouble taken to make the final farewell a reflection of the family's wish reflects the care of Carole's approach. She sits, talks and listens for at least an hour; longer if that is what the family wants and needs. She composes a eulogy that reflects what has been said and sends it to the grieving partner or family for their approval. If they want other elements to be included, that is what she does, because in the atmosphere of strong emotion and recall of events,

there will be more to add. The long life of a loved elder relative will include so much; the short life of a younger person will contain so many details of their strong enthusiasms that friends will want to hear recalled. Knowing what those memories are is a vital part of paying full respect to the memory of whoever has been lost. It may be a favourite piece of music or a poem that always rang a chord in their memory. As Carole says: "Everyone has a story to tell."

To arrive at this point in a long working life and realise that it's what you can be happy doing is quite an achievement. She has an air of comfortable understanding and patience when she sits and gently chats, with no pressure, no haste to move on to another appointment. This lady is there to help those who are mourning and she will not lose sight of the need to listen and care.

Details of how to contact her are given in her advert at the bottom of this page. Anyone dealing with the loss of a loved one will find sympathy and help.



A M Plumbing & Heating

- *General plumbing
- *Oftec approved
- *Bathrooms
- *Oil boilers
- *Hot water cylinders
- *Servicing
- *Central heating
- *Power flushing

Call Today: 07565 181554

Precious Memories
Funeral Celebrant - Carole Clayton
07971 543790— 01584 890007
South Shropshire—North Herefordshire—North Worcestershire
Celebrant@preciousmemoriescelebrant.net
www.preciousmemoriescelebrant.net
FB: @preciousmemoriescelebrant
Everyone has a story to tell—I'd be honoured to be the one to tell the story of your Loved One.

More Clarion Smalls

GUTTER CLEANING SERVICE

No ladders or scaffolding needed.
Can reach any awkward place.

All residential and commercial

Competitive rates

Call Ian on 07870384096

HIS & HERS

Dog Grooming Parlour

All breeds and
Cross breeds professionally
Trimmed and Groomed



J. A. Guest

Tel: 07790 796 027

PAUL LYNCH PLASTERING SERVICES

Recently relocated. Offering all aspects
of plastering including making and
repairing mouldings, cornices, etc.
Fully insured, references available.

07890 049 592

or

01299 272931

Washing Machine
Repairs and Sales

JULIAN BREAKWELL

Telephone 07791 633 746

Repairs to all makes, including
Bosch, Hoover, Zanussi and
Hotpoint

**NO CALL OUT CHARGE
FIXED LABOUR COST**

Ever After

- Breakfast club
- After school club
- Holiday club
- "Forest schools" outings
- 15hrs education funding
- 24U funding
- Age ranges: 3 months to 11 years



Day Nursery
Cleobury Mortimer

Please contact us on 01299 272 777
Or Call in to see us anytime.

Friendly, Caring Environment for the Community

Hi everyone, don't forget that we
are still collecting soft toys and
teddies to be sent to the less
fortunate.

So drop them off in Market Hall
please.

Many thanks for your help.

Collections4charities.com 07976307889

Piano tutor

Francis Engleheart

*All ages — I specialise in teaching adults
without previous experience*

I come to you

07710 288526 • fengleheart@hotmail.com

S. L. CARTER

**PROFESSIONAL PAINTER AND
DECORATOR**

**PLASTERING, TILING, COVING AND
GLAZING**

CLEOBURY MORTIMER

TEL: 01299 272868

MOBILE: 07815 483 029

So, Boris has finally fallen on his sword (almost) resulting in an 'Economist' one word headline 'Clownfall!'. By the time you read this his replacement will (nearly) have been selected but only time will tell whether his successor is any more competent. He always liked to claim similarities with Churchill but when the latter moved into Chartwell and wanted a treehouse for his children he built it himself. When Boris wanted something similar at Chequers, a wealthy Tory donor was tapped up to fund the £150,000(!) cost. The idea was dropped after the ruse became public and amid security concerns so no comparison there. Still, he can but dream - don't forget that after losing the 1945 election, Churchill returned for another spell as PM five years later... However, Boris has at least one cricket fan. When India took a wicket at Edgbaston recently their captain, Virat Kohli, angrily gestured at one stand to be quiet. Was this because his players were being abused? Apparently not as the crowd concerned were singing 'Boris is a W****r'.

Mind you, the fight for the top job seems, unsurprisingly, to be descending into criticism and backstabbing. This reminds me of the quote from Jonathan Swift nearly 300 years ago which goes: 'when a true genius appears in the world you may know him by this sign; that the dunces are all in confederacy against him'. Of course, it doesn't quite work in this case as there are plenty of dunces involved but no genius....Talking of classic authors, have you sorted out your holiday reading list yet? If you are thinking of revisiting the classics, bear in mind this thought from Mark Twain. He said that the definition of a classic work is something that everyone wants to have read but no one wants to read. So best to cross 'War and Peace' off the list straight away.

Kellogs haven't exactly covered themselves in glory at the High Court after arguing that their breakfast cereals should be excluded from advertising restrictions to be imposed on

products containing high levels of sugar. They claimed that as their products were normally consumed with milk, the overall sugar content was low enough to circumvent the restrictions. The presiding judge was not impressed saying that the argument was 'surprising' and dismissed the claim. So good try but no cigar (with or without added milk).

Worrying statistics on crime generally with recent figures showing that suspects were charged in just 6% (only 1.3% in rape cases) of reported crimes. This is charged, not convicted, so the conviction rate will be even less. Add to this the large number of incidents that are not reported because victims see little point, then the picture is very concerning. We have seen evidence of this recently here in Cleobury with an outbreak of drug related violence. This has resulted in the previously occasional Police presence being stepped up, but for how long? I appreciate that the Police are overstretched and also having to act as surrogate social workers, but if this sort of activity is not addressed promptly, then it will inevitably escalate. Perhaps it is also time for those 'respectable citizens' enthusiastically consuming the products concerned to reflect that it is their demand that fuels the violence. So, people, the next time you powder your noses from the inside or light up a spliff, think of the journey it takes to get to your designer kitchen table and the suffering it causes.

Still, the DVLA are doing their bit to address the cost of living crisis. It was recently announced that MoT inspections will become biennial. Not sure if this is to reflect the fact that many of their staff are still at home and not addressing the giant post backlog or just a way of reducing motoring costs. You are free to decide the real reason for yourselves but one cynic added that this measure would also reduce food bills as drivers of the most unsafe vehicles would be dead and not needing to eat....

Ariadne J. Grumpy

NEWSPAPER DELIVERIES



Monday- Saturday

Covers Cleobury Mortimer and Clee Hill

Contact Laura Callwood on 07495 708404

or lauracallwood@outlook.com

WILMAS CLEANING & IRONING SERVICES

Experienced cleaner, very trustworthy and reliable. If you would like your ironing done you can drop to my house. I am available weekdays, and weekend's times/days flexible. References are available upon request.



Please contact me for further details on

07891416477
01299 272 941



Number Nineteen

No.19 Denture Repairs

Dental Laboratory

SPEEDY, QUALITY DENTURE REPAIRS

Cracked/broken dentures repaired the same day.

A 1 HOUR service is available for when time is of the essence, just call to make an appointment .

19 Lower Street, Cleobury Mortimer, DY14 8AL

Email: nevilleweaver@googlemail.com

Phone: 07973856733

All work undertaken by a GDC registered technician



A.B. Plastering
Plus Traditional Lime Plastering

Adrian Booton
PLASTERER

4 Severne Green, Bayton
Nr Kidderminster, DY14 9LL

Tel: 01299 832 838
Mobile: 07974 582 524



TOTAL PROPERTY MAINTENANCE

Fireplaces built for multi-fuel burning stoves,
Plastering, Building & General Maintenance

Rob Taylor

Mobile: 07944 074540

Landline: 01299 832734

Email: rptbuilding@hotmail.co.uk

E.PURSLOW & SON LTD

Stone, Gravel, Cement Supplies

Approved Coal Merchant

Calor Gas Stockists

Tarmacadam Specialists

Car Parks and Driveways

Constructed.

TEL: 01299 270314

David Ward
firewood



Do you need a dependable consistent quality supply of seasoned or kiln dried hardwood and softwood firewood?

Cut and split to suit and delivered in breathable 1.2-cubic metre bags, so no need to restack.

Small delivery vehicle, fitted with crane, can deliver to most locations and situations.

CALL DAVID TO DISCUSS YOUR REQUIREMENTS:

Mobile: 07866 441154

Alan Smith Aerials

Digital TV Installations.

Freeview aerials fitted and distributed around the house.

Freesat box, dish, and cable supplied and fitted. One off payment, **No contract or subscription required.**

Extra points, Repairs, New fits, Set ups, Multi room.

All work is carried out by a *Local*, fully qualified and insured installer.

01299 270007 or 07970 675728

THE CLARION SOCIAL CALENDAR

Date	Time	Details	Contact	Telephone
Wed 3 rd	7.30	Whist Drive, Doddington Village Hall	01584890764	Sonia Pearsall
Thurs 4 th		BLACK & PURPLE WHEELIE BINS EMPTIED TODAY		
	10.30	Rock Pathfinders walk Offa's Dyke at Knighton, Powys. PAGE 21		
		The Burwarton Show. The biggest 1 day agricultural show in the country.		
		Post Burwarton Show Party at the Fighting Cocks in Stottesdon, BBQ & Bop!		
Sun 7 th	10.00	The Parish Walk starts at the Parish Church. PAGE 21		
	3.00	Afternoon Tea at the Coach House, Hopton Court. PAGE 5		
Mon 8 th	6.30	Creative Writing Group meet at the library. PAGE 7		
Tues 9 th	6.30	Cleobury WI take a walk around the town. PAGE 7		
Wed 10 th	10.00	Walking for Health start out from the Parish church. PAGE 21		
	7.30	Royal British Legion gather at the Sports & Social Club	01299 271384	Mike
Thurs 11 th		GREEN DOMESTIC WHEELIE BINS EMPTIED TODAY		
	7.00	Severn Hospice Support meet at The Bramleys, Chorley. PAGE 5		
Wed 12 th	8.00	Bingo Night at Doddington Village Hall	01584 891874	Sonia Pearsall
Sat/Sun 13/14 th	10.00	Far Forest Country Show. Great family event		
Wed 17 th	7.30	Whist Drive at Doddington Village Hall		
Thurs 18 th		BLACK & PURPLE WHEELIE BINS EMPTIED TODAY		
	10.00	Rock Pathfinders step out from their local, The Forresters, Callow Hill. PAGE 21		
Sat 20 th	9.30	Cleobury Country Farmers Market, in & around St Marys Church		
Wed 24 th	10.00	Walking for Health meet and move from the Parish Church. PAGE 21		
Thurs 25 th		GREEN DOMESTIC WHEELIE BINS EMPTIED TODAY		
Fri 26 th	8.00	Bingo Night, Doddington Village Hall		
Sat 27 th	10.00	CMFA Social Walk starts from the Market Hall.		
Tues 30 th	7.30	Nearly Dead Poets Society gather at the library to read, listen and laugh		
Wed 31 st	7.30	Blues Night at The hatch, with Remi harris. 01584 881654		
		LOOKING AHEAD TO SEPTEMBER.....		
Thurs 1 st		BLACK & PURPLE WHEELIE NIBS EMPTIED TODAY		
Wed 7 th	7.30	Whist Drive at Doddington Village Hall		
Thurs 8 th		GREEN DOMESTIC WHEELIE BINS EMPTIED TODAY		
Sun 11 th	7.00	Nightingale Nursing AGM, Sports & Social Club, Love Lane. PAGE 7		
		AND A REMIDER ABOUT THESE REGULAR LOCAL EVENTS....		
Mon	8.00	Bingo in Market Hall, except for Bank Holidays		
1 st Wed	6-7pm	Late night at the Food Bank, Market Hall		
Thurs	10.00	Drop in at St Marys Church to chat and maybe share a problem?		
Thurs	7.00	Lessons in the Birth Dance for expectant mums. In the Market Hall		

LATE NEWS COMING IN "Messages from Heaven"

On Saturday, August 27th, international psychic medium Barbara Northall will be presenting an evening of clairvoyance under the title "Messages From Heaven" at Kinlet Village Hall. Tickets are £10 each and private readings will be available on the night.

Further details on 07837 609585

Beer and Pizza Night

Wednesday, August 10th is the date for a Beer and Pizza Night at Hobson's

Brewery off Tenbury Road. It's all part of their support of Slow Food Ludlow Marches and their Airstream Bar will be serving fine ales next to the renowned Pizza Trailer from Craven Arms. There'll be a brewery tour, beer tasting (well, what else would you taste at Hobson's?) pizza and nibbles plus a brewing pub quiz with a prize for the winning team. Entry by tickets only, available only through the Slow Food website:

Lower St Garage

7 Lower St, Cleobury Mortimer. DY14 8AA



- M.O.Ts on cars, motor bikes & small commercial vehicles
- Tyres, Tyre fitting,
- Puncture repair and Tracking.
- Diagnostics, Air conditioning
- Welding.
- Service and Repairs to most vehicles.
- Delivery and Collection Service Available

Contact The Team at Lower St Garage on: 01299 270208



Stove Installations, Service and Repair

- All solid fuel wood burners and boilers supplied and installed
- Chimneys relined and twin wall systems built
- Chimney Pots, Cows, Carbon Monoxide alarms and Air Bricks fitted
- All Stoves and Fires serviced including chimney sweep
- Hetas Landlord Safety Certificates

Tel: 01299 272712 Mbl: 07807 343006
email: info@rweaversservices.co.uk



twshq

Family run business of 30 years, call us for a free no obligation quote

Finance available, buy now and pay later

5 Lupin Works, Worcester Road, Kidderminster DY10 1JR
Phone: 01562 822855 – Email: sales@twshq.com

Tele:- 01299-272757 *Hands on Printing* **Email:- clickclick2@hotmail.co.uk**
Mobile 07708 587787

All digital media printed to 6"x4" 5"x7" 8x6" 10"x8"
CANVAS WRAPS FROM 12"X16" - 30"X 20"
ENLARGEMENTS FROM 12X10" TO 24X36"
 FROM PHOTO'S, DIGITAL MEDIA & 35mm SLIDES

PASSPORT PHOTO'S ONLY £5-00
WHILE YOU WAIT

MOST VIDEO FORMATS TRANSFERRED TO D.V.D.
 USB or SD cards

INCLUDING VHS - VHSC - SONY 8 - DIGITAL 8 - Hi8 - MINI DV & BETAMAX
 REEL TO REEL & CASSETTE
AUDIO TAPES & OLD LPs TO CD

PHOTO & VIDEO FILES TRANSFERRED FROM MOBILES TO DVD ETC.

Video Filming Service

43, High St.
 Cleobury Mortimer.
 DY14 8DQ

STANDARD 8 - SUPER 8 FILMS TRANSFERRED TO D.V.D.
 USB or SD cards
DAMAGED PHOTOGRAPHS RESTORED ETC.

BIRTHDAY AND CELEBRATION BANNERS

Look Who's 50 Today!

VINYL BANNERS - BUSINESS CARDS - SHORT RUN FLYERS INVITATIONS - ORDERS OF SERVICE

B-W OR COLOUR PHOTOCOPIES
SELECTION OF PHOTO FRAMES
 Traditional Studio Portraits and Pet Photo's

 **LACON CHILDE SCHOOL** 
 the future begins here
 Headteacher: Darren Reynolds

1735



Lacon Childe School, Love Lane, Cleobury Mortimer, DY14 8PE Tel. 01299 270312 email - admin@lacon-childe.org.uk


LUDLOW SALVAGE
 ~ Est 2017 ~
 Reclaimed Building Materials and Architectural Antiques

Station yard, Station road,
 Woofferton, Ludlow SY8 4AW

T 07805 312168
@ ludlowsalvage@gmail.com
f /ludlowsalvage
ig /ludlowsalvage

WWW.LUDLOWSALVAGE.CO.UK

BoomeranG
 of Cleobury Mortimer
 private hire travel

- Friendly, reliable service
- Local & long distances
- Fully council licensed (up to 12 passengers)
- Airport transfers
- Courier service
- All occasions catered for

Tel: 01299 271257, Mob: 07411 142755, Email: stuart.boomerang@yahoo.co.uk

Cleobury Mortimer Golf Club

At Cleobury Mortimer Golf Club we believe that a really enjoyable golf day takes more than just a great golf course. We make sure that your whole experience, from the friendly welcome in the golf shop to your drinks and meal in our relaxed clubhouse, is all part of a day you'll remember.



Everyone Welcome

Membership available.

Just some of the many benefits of joining Cleobury Mortimer Golf Club

- Access to full length 27- hole golf course
- Opportunity to achieve and maintain a handicap
- Family, Friendly Environment
- Playing opportunities at all times of the week
- A range of competitive opportunities
- Open dawn to dusk 363 days a year.

We look forward to meeting you at Shropshire's friendliest golf club.



- ☎ 01299 271 112 (ext 1)
- ✉ pro@cleoburygolfclub.com
- 🌐 www.cleoburygolfclub.com



**FRIENDS OF ROCK CHURCH ARE
HOLDING A TALK AND SLIDE
BY ROSEMARY WINNALL MBE
THE NATURE OF WYRE**

ON

**FRIDAY 9th SEPTEMBER AT 7.30pm
AT ROCK CHURCH**

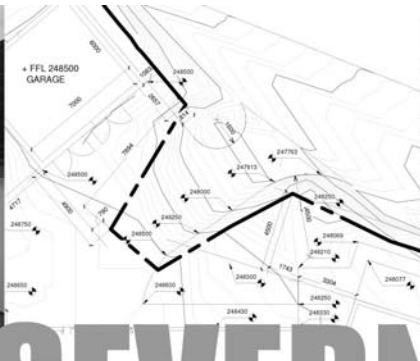
**TICKETS £5 INCLUDING
LIGHT REFRESHMENT**

**TICKETS OBTAINABLE FROM
D.HUGHES 266235**

SHEILA NOTT 266353

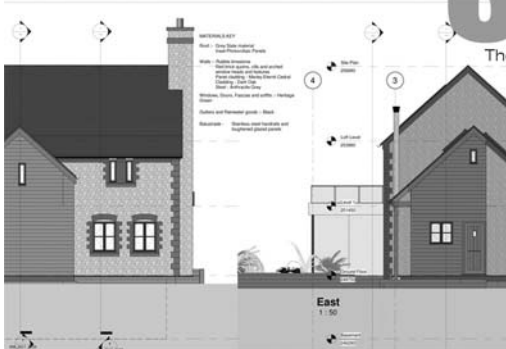
CLIVE SKIDMORE 07878 295396

**ALL PROCEEDS FOR THE
UPKEEP OF THE CHURCH**

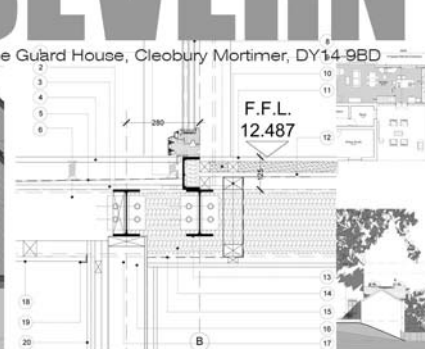


SEVERN

architects



The Guard House, Cleobury Mortimer, DY14 9BD



We are a friendly Shropshire based architectural practice with plenty of experience in all kinds of residential projects large and small. Using the latest 3D software package and technology we can turn your virtual dream home into a reality.

Contact us now on 07825 759484 or email julie@severnarchitects.co.uk for your consultation

Our Architectural Design Services include

- Design & Feasibility Studies
- General project Advice
- 3D Modelling
- 2D CAD Drawing
- Planning Advice and Submissions
- Building Regulation Applications
- Tender & Construction Drawings
- Contract & Project Management

RIBA 

Chartered Practice

KIDDERMINSTER

SELF STORAGE AND REMOVALS



STORAGE

Free insurance . Flexible Terms
Fixed Price Guarantee . No hidden costs

REMOVALS

Professional Removal Service
Est. over 25 years

PACKAGING MATERIALS

Boxes, Bubblewrap, Tape Etc. for sale
Free local deliveries on orders over £20

01562 744088

www.kidderminsterselfstorage.co.uk

Unit 11 Finepoint Way, Stourport Road, Kidderminster DY11 7FB
info@kidderminsterselfstorage.co.uk



CLEOBURY COMMUNITY HUB

Coffee Shop, Climb61, Youth Events

Mondays - 9:30am - 8pm

Tuesdays - 9:30am - 9pm

Fridays - 9:30am - 5:30pm

We would like to thank you all for your commitment and support to the CCH over the past 12 months. Especially to our amazing volunteers who give up their time regularly to support our community and serve you! Our data records run on an academic timetable and we just wanted to highlight how the CCH has been used and how many visits we have had so far this year...

Since September 2021 we have had: 9,073 visits to the CCH. Over 250 visits to Rock Tots. 773 visits to Hub Youth. 1,083 visits to the Sunday Session. 870 visits to Climb61. 252 visits to Kids Climbing Club and 145 Youth Climbing visits. We have also worked with 55 primary/secondary school pupils through our intervention programme at Climb61.

August is a typically messy month with different events happening, regular activities having a break and lots of people away. The CCH is no exception to this and will be **closed for our 2nd holiday club - 22nd-24th August.**

Holiday club booking is open - £12 per child 9:30am-3:30pm 22nd-24th August. Book via events and bouldering booking at: www.smy.org.uk

Don't forget our regular activities:

Mondays - Coffee Shop, Soft Play, Climb61 Bouldering.

Tuesdays - Coffee Shop, Climb61 Bouldering, Soft Play

Wednesdays -

Thursdays - Ladies Night (25th August)

Fridays - Coffee Shop, Climb61 Bouldering, Soft Play

Climb61 August Session Times - To book: www.smy.org.uk

Mondays 9:30am-11am, 11:15am-12:45pm, 2:15pm-3:45pm, 4pm-5:30pm,
5:45pm-7:15pm, 7:30pm-9pm

Tuesdays - 9:30am-11am, 11:15am-12:45pm, 2:15pm-3:45pm, 4pm-5:30pm,
5:45pm-7:15pm, 7:30pm-9pm

Fridays - 9:30am-11am, 11:15am-12:45pm, 2pm-3:30pm



@cleoburycommunityhub



@saintmarysyouthproject @cleoburycommunityhub

ONE STOP ROOFING

The Flat Roof Specialists

- Rubber, Fibreglass & Felt
- Re-pointing & Chimney Repairs
- Fascias & Guttering



Take advantage of our offer: Replace your flat roof Making EPDM (rubber) your choice for a long lasting, weatherproof & high slip resistant membrane, with a lifespan of 50 years, **get it for the same price as felt**, which only carries a 10 year guarantee!

Replace your flat roof with EPDM (rubber) & add a skylight or lantern, giving extra light to your room starting **from as little as £400!!**

Freephone 0800 0855277 * 07538 471274

[Www.onestop-roofing.co.uk](http://www.onestop-roofing.co.uk)

onestoproofinguk@gmail.com

Family business est. 35 years.
All repair work undertaken

Proud members of
Checkatrade.com
Where reputation matters

CLEOBURY SEAFOOD & FREEZER CENTRE

6 Newhouse Farm - Tenbury Road - Cleobury Mortimer

01299 271345

Ready Meals

*We stock a wide range of ready meals, from the ordinary to the extra ordinary !
Plus a range of Vegetarian, Gluten Free and Vegan meals.*

Mr Dave's

*Meat, Chicken, Prawn and Vegetarian Balti, Madras Curry
Mr Dave's extra large naan, plain and garlic & coriander.*

Fish

*Cod, Haddock, Plaice fillets, Sea bass, Lemon sole, Cod Loins, Smoked Haddock.
Battered & breaded fish fillets. Young's Jumbo Cod Fish Fingers.(Very Popular)*

Seafood

*Raw king Prawns, Squid, , whitebait, cooked tiger prawns, scallops, seafood cocktail.
Hot & Spicy Prawns, Breaded Cod & Plaice Goujons*

*New Fish Cakes Thai Style Cod & Prawn, Smoked Haddock, Mozzarella & Spring Onion,
Sea Bass, Cod, Lime & Ginger.*

Fruit and Vegetables

Potato Products

Bannister Jacket Potatoes, Oven chips, Sweet Potato Fries Twister Fries, Hash Browns, Spicy Wedges

Chicken Products

Southern Fried Breaded Chicken Steaks, Breaded Chicken Goujons, Chicken Nuggets, Chicken Bites.

Gateaux for all occasions

BENNETTS ICE CREAM

Opening Times 9am to 4.30pm Mon to Friday. Saturday 9am to 12

Visit our web site www.cleoburyfreezercentre.co.uk

Cleobury Clarion August 2022

Page 54



"We tried artificial flies. We tried lures. We tried live bait. Nothing works ... it's like they're psychic!"



"Blood-curdling screams. Hayes, will do nothing to help us catch a fish."



Live Life @ Home

Home Support Services

All staff enhanced DBS checked with over 20yrs experience and training within the local authority/social services mainstream and dementia care sector. Fully insured.

Are you in need of support with the following basic day to day tasks?

Assistance during the day or night	Completing Forms
Companionship	Pet Care
Shopping/Household tasks	Attending social events/ appointments

Contact Liz
Tel: 01299 271623
Mob: 07826 929222
liz@lifelifeathome.co.uk

Other support services available on request.

www.lifelifeathome.co.uk

Contact Tracey
Tel: 01299 211660
Mob: 07957 659909
tracey@lifelifeathome.co.uk

BOOK YOUR MOT WITH US



LEWIS MOTORS KINLET

☎ 01299 841 391



SERVICING & REPAIRS TO ALL MAKES & MODELS

■ Clutches & Cambelts	■ Exhausts, Batteries & Tyres	■ Wheel Alignment
■ Diagnostics	■ Recovery	■ Welding

Follow us on Facebook: LewisMotorsKinlet

KINLET C OF E PRIMARY SCHOOL

Love to Learn – Learn to Love










- Outdoor play areas
- Small family atmosphere
- Kind – Inspire – Nurturing – Learning – Eco-friendly -Teamwork

www.kinlet.shropshire.sch.uk
admin@kinlet.shropshire.sch.uk

Telephone: 01299 841210

Booton Brothers



Construction

Rich: 07445298747

Mike: 07853225401

bootonbrothers@outlook.com

All building work undertaken

Elite Sweeps

Professional Chimney Sweep

& HETAS Stove Installer

- ✓ Prompt, reliable & friendly service.
- ✓ Cowls and Chimney Pots fitted.
- ✓ Fully qualified and fully insured.
- ✓ Guild certificates issued after every sweep.
- ✓ HETAS Approved Installer.



Call Eddie Tel. 01299 382222 / 07895 612915

www.elitesweeps.co.uk



I.P.T. GROUND SOLUTIONS

Over 30 years experience

For all pipe installations:

• Sewage • Storm drainage

• Blockage/Repairs • Ditches

• Grass Cutting / Hedge Trimming

• Driveways • Ground clearance

For all your ground needs

Contact Ian on:

T: 07870 384 096

E: ian.ptaylor@yahoo.com

W: iptgroundsolutions.co.uk

The heat was on if only for a few days, but unfortunately the heat in the world of SCAMMING is still very much turned up. Whatever is happening in the world today, these evil people will always find a way to turn any event into an opportunity for scamming. This article focusses on scams relating to AMAZON. Most of us will have heard of Amazon, founded 28 years ago by Jeff Bezos. He initially started off selling books online, and 3 years later went public on the stock exchange as the business expanded beyond just books. Today Amazon is listed as an American multinational technology company which focuses on e-commerce, cloud computing, digital streaming, and artificial intelligence. It has been referred to as "one of the most influential economic and cultural forces in the world", and is one of the world's most valuable brands. This makes it a juicy target for scammers simply because people believe that if they get a message from Amazon, it must be genuine. Sadly we know this is not always the case. Various Amazon scams came to light in 2020 but were probably the same people linked to Banking Scams that date back to 2012. The card scams come in various guises. One variant is a message supposedly from a friend or relative asking you to buy an Amazon Gift Card and then send them the voucher details for redemption. The message is fake because, unknown to you, your email contacts details have already been hacked and sold and the scammers can easily fake an email to you that appears to come from someone you trust. You buy the card to whatever value you are asked for, it's usually not much more than about £25, which most people would be happy to pay for a family member. The email usually asks you to just send the redemption code on the voucher which is all the scammer needs to make a purchase from Amazon online. Of course, the same scammer will have sent maybe hundreds of similar email requests out and with just 100 replies will have netted voucher codes to the value of £2,500 to spend with Amazon. To hide their tracks there are

various methods used to purchase from Amazon which I will describe next month. But I want to illustrate a recent example of an Amazon gift card scam that has been reported to me by a local resident. This was real and resulted in a loss of £200. We will call her Louise to protect her anonymity. Louise received a message from someone she knew but had not heard from in a while. The person started off in a chatty way over several messages until one of the messages asked for a £100 Amazon gift voucher and would she just send the voucher code. Louise genuinely thought she was helping an old friend and agreed to send a further £100 voucher. At this stage one of her friends popped round to see her and when was told about the messages, asked to see them. Her friend immediately spotted the signs of fraud and fortunately ensured that Louise would not send any more. There were aspects of the initial messages that did not sound right if they were supposedly from a long standing real friend. Louise had not stopped to read fully or think about what was not being said in the message and just wanted to help a 'friend'. While the preceding example might be obvious to some, an elderly person living alone is a classic target for hacking and subsequent attempts to defraud. There are several examples known to Amazon of scams involving their gift card product but they nearly always involve asking for the voucher details when the victim has agreed to purchase a card. **How do you stay safe.** The steps are simple. **ALWAYS** check and verify who is contacting you. If it appears to be family, contact them back by another method to check if it's genuine. If it's an unexpected email or phone call, check the full address of the email sender to see if it appears genuine. If in doubt contact the organisation by a different method to be sure. If the caller claims to be from your bank or a financial institution, call back on a number you know to be genuine. In today's world, no genuine organisation will criticise you for being careful. **It's your money, your life, take the time to protect yourself.**



EVERYTHING INTERIOR UPHOLSTERY

REUPHOLSTERY SERVICES:

- AUTOMOTIVE
- CARAVANS
- CAMPER VANS
- TRADITIONAL & MODERN
- COMMERCIAL & BESPOKE
- DOMESTIC
- CARPET & UPHOLSTERY CLEANING
(in partnership with WE GLEAM)

OVER 30 YEARS EXPERIENCE



CONTACT US TODAY

Unit 19 Old Station Business Park, Cleobury Mortimer, DY14 8SY
07961 712683 / 07961 792103
www.everythinginterior.co.uk
email: everythinginterior@outlook.com



Professional Family Estate Planners



- Wills or Lasting Powers of Attorney from £95
- Free Will reviews
- Probate support
- Care home fee avoidance
- Free funeral plan with every Will
- Family Protection Trusts

"A lifetime's attention to complex legal issues as a retired Detective Superintendent and now a Private Client Lawyer means **you can definitely trust Mark and his daughter Lauren** to write your Will"

T: 01299 251442
E: info@ambalegalservices.co.uk
W: ambalegalservices.co.uk



- Appointments by telephone, video link or in the comfort of your own home
- Over 45 years' experience in law
- Friendly and professional support for you and your family
- Call us up to see how we can help!



ARE YOU LOOKING FOR Independent Financial Advice?

Consequential Planning are your local independent financial advisers. We have a highly qualified team with extensive experience in all aspects of financial planning. We can offer help and advice on investments, pensions, protection and mortgages.

Telephone 01299 407128
 to arrange a free financial review or visit:
www.cnsq.co.uk





Burning Blocks

www.burningblocks.co.uk



A safe and easy to use alternative for logs for both wood stoves and open fires

Discount for local delivery quote: "family10" at the checkout

- Easy to light / roaring fire in under 5 mins
- Easy to stack / 10kg packs
- High heat / similar to coal on output
- Each briquette lasts over an hour
- Low moisture / 8% moisture maximum
- Store undercover

UK wide delivery available, approx. 2 days

buy online at www.burningblocks.co.uk

For more information:-

Email: burningblocks@gmail.com Website: www.burningblocks.co.uk FB: <https://www.facebook.com/burningblocksbriquettes>



Richard Haines

The Worcestershire Chimney Sweep

- ◆ Traditional & Power Sweeping Services
- ◆ Certified Chimney Sweep
- ◆ Insurance Recognised certificate issued



M: 07752 116629 T: 01584 781358 E: lostcity5@hotmail.co.uk

www.theworcestershirechimneysweep.co.uk




LUDLOW FIREWOOD

~ Est 2019 ~

Suppliers of Premium Grade Ready to Burn Firewood, Beautifully Crated and Delivered to Your Door



T 07949 318014

@ ludlowfirewood@gmail.com

IG /ludlowfirewood

F /ludlowfirewood

Station yard, Station road, Woofferton, Ludlow SY8 4AW

WWW.LUDLOWFIREWOOD.COM

Available in Barrow bags and nets for all your access requirements.

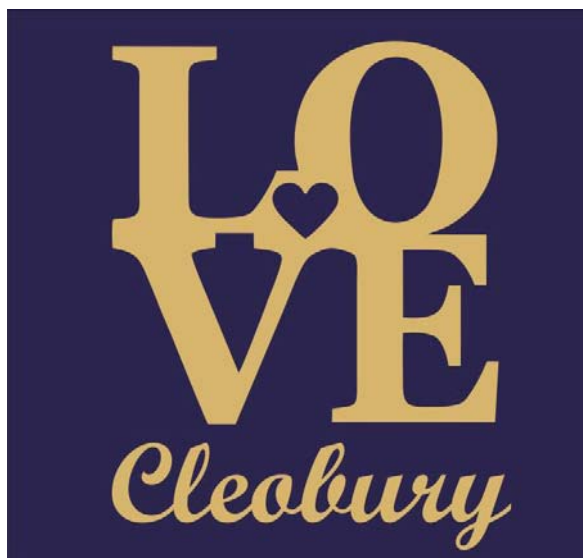


**CLEOBURY BANK
HOLIDAY IN BLOOM**

AUGUST 27TH - 29TH

Let's get Cleobury looking bright
and colourful for the August
Bank Holiday weekend for
everyone to enjoy

Supported by the Town Council,
residents and local businesses



Prizes will be awarded for
the following:

Fabulous Front Garden

Best Hanging Basket

Prettiest Planter

You can nominate yourself or
someone else for a chance to win
a prize and we would love to see
your photos ... please send your
nominations and photos to:

cleobury.council@gmail.com



EnergyZone

Integrated Renewable Solutions

SHROPSHIRE HEAT PUMPS

EnergyZone are one of Cleobury's best kept secrets. We are one of the largest and longest established renewable engineering companies in the UK installing heat pumps since 2003. 14 in house engineers with over 130 years combined experience completing over 1000 Domestic and Commercial systems all over the UK. Based next to Hobsons Brewery in Cleobury Mortimer we are your local experts in heat pump systems.

Heat pumps are rapidly becoming the standard heating system for all new build properties, as they always have been in many parts of Europe, and the Government is offering a very generous incentive to encourage anybody with an Oil, LPG or Electric boiler to replace this with a heat pump.

Replacing your boiler with a heat pump has many advantages;

- Lower running costs for your heating - up to 50% lower
- No dependence on fuel deliveries
- Removal of current boiler under our scrappage scheme
- Up to a 10-year warranty with a 20 to 25-year life expectancy
- Government backed Renewable Heat Incentive (RHI) to help cover installation cost over 7-years (available until March 2022)

What can EnergyZone offer?

Complete design and installation of a heat pump system, including all paperwork required to enable you to claim the maximum Government incentive

Upgrade of your old radiators and hot water cylinder if required

Local support with annual servicing through our EZcare package

With the current Government incentive now is a great time to consider scrapping your old fossil fuel boiler and installing a heat pump that is not only good for the planet but also your pocket.

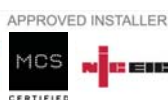
Call us for a free home assessment from one of our engineers.



Fully accredited installers of the brands above ensuring the correct model is selected for your home

01299 270011

www.energyzone.co.uk sales@energyzone.co.uk



Community Contacts for Clarion Readers

CEMETERY ADMINISTRATOR	Theresa Ray	07703 965 064	theresa.25016@hotmail.co.uk
CLEOBURY COUNTRY CENTRE		01299 272300	In Love Lane, 9 to 5 Mon to Fri.
CLEOBURY DENTAL PRACTICE		01299 271747	www.cleoburydental.co.uk
CLEOBURY CARERS	Michelle	01743 341995	carerssupport@shropshire.gov.uk
CLEOBURY COMPASSIONATE COMMUNITIES	Katja Jones	07966 080111	Tuesday and Thursday at the Medical Centre
CLEOBURY MORTIMER LIBRARY		01299 272301	Open 9 to 7 Mon, 9 to 5 Tues/Fri and 10 to 1 Sat.
LOCAL POLICE	PC Wayne Strangwood	07773 054 587	wayne.strangwood@westmercia.pnn.police.uk
CLEOBURY MORTIMER GUIDES	Fiona McCallum	07805 737 555	
CLEOBURY MORTIMER SCOUTS	Lowri Hughes		cleoburybeavers@gmail.com
CRIMESTOPPERS		0800 555 111	Free Police contact. Talk in confidence, to report any crime.
DOMESTIC VIOLENCE HELPLINE		0800 783 1359	Women's Aid, 24 Hour support:
HOME FROM HOSPITAL		01584 878046	Help over the first weeks back home from Age UK
MARKET HALL	Kim	01299 272732	markethall@cleobury.org.uk
MEDICAL CENTRE		01299 270209	Out of surgery hours, use the Shrop Doc Service.
SHROP DOC		111	Service available evenings and weekends
THE MEN'S SHED	Pete Blackburn	07776 243 584	petblack@me.com
THE PHARMACY		01299 270219	Closes for half day on Saturday. Delivers prescriptions
ST ELIZABETH'S CATHOLIC CHURCH	Angela Flowers	01299 270318	Sunday Mass at 9.00am
NIGHTINGALE NURSING FUND	Rosemary Abbiss	01746 718451	
TOWN COUNCIL	Clerk Matthew Sheehan	01299 271154	Cleobury Country Centre 9 to 2 pm, Mon to Fri. www.cleobury.org.uk . Council meets in the Centre on the first Monday of the month
POST OFFICE		01299 270211	In the Select and Save Grocery Store, Church Street
SAINT MARY'S YOUTH PROJECT	Mark Greaves	07828 116810	mark.stmarys@live.co.uk
SHROPSHIRE COUNCIL		0345 678 9000	
SOUTH SHROPSHIRE YOUTH FORUM		01584 874922	
VOLUNTARY CAR SCHEME		01299 666119	Mandy Smith
WASTE DISPOSAL		0345 678 9007	The contractor is Veolia
WATER SUPPLY EMERGENCIES	Severn Trent	0800 783 4444	
NEWLIFE CHURCH	Pastor E Stirrup	01562 630595	Sunday services at 10.30

Collect the Clarion in Cleobury from: Select and Save Grocery, Londis Store, Cleoburrs, Cleobury Cafe, The Severn Hospice Shop, Mid Counties Co-op, Purslows, and The Library.

Out in Cleobury Country at: Heath Farm Meats, **Bagginswood**; **Clee Hill Stores**; **Clows Top Stores**; The Sun and Slipper, **Mamble**; **Hopton Bank Service Station**; ; **Ludlow Library**; **Mahorall Cider Farm**; The Colliers Cafe & Shop, **Rock**; The Fighting Cocks, **Stottesdon**; The Duck Inn, **Chorley**; The Live and Let Live, **Neen Sollars**; The Eagle and Serpent, **Kinlet**; Parker Motors, **Ditton Priors**.

Copies are also available from the Parish Churches in: Cleobury Mortimer, Bayton, Doddington, Hopton Wafers, Milson, Neen Savage and Neen Sollars.

Missed your Clarion? Cleobury Mortimer Library keeps the current month's copy on file and all back issues are available to read as pdfs from www.cleoburyclarion.co.uk.

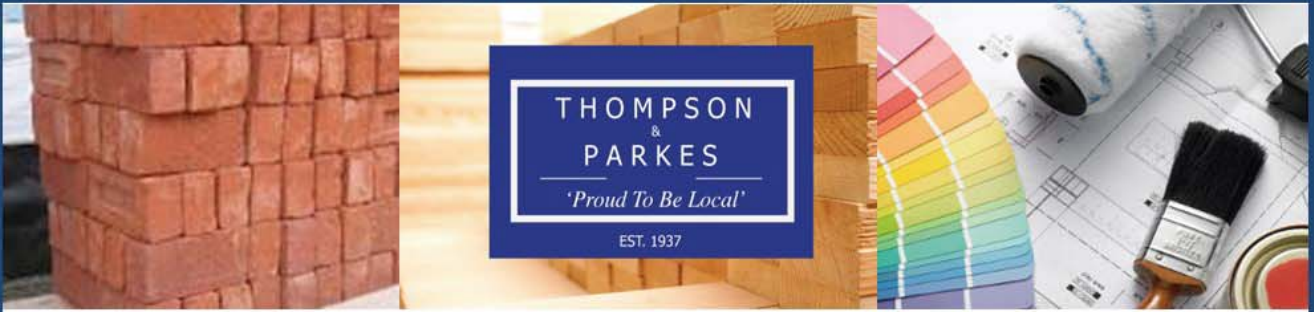
DEADLINE FOR THE SEPTEMBER ISSUE: AUGUST 22nd. CONTRIBUTORS PLEASE NOTE THAT THIS IS THE LAST POSSIBLE DATE TO RECEIVE REPORTS.

Editor and Advertising Sales: Jim Reynolds, 4 Childe Road, Cleobury Mortimer, Shropshire DY14 8PA. Telephone: 01299 270642 Mobile: 07410 977 212

E-Mail: editor@cleoburyclarion.co.uk or uncle.jim@icloud.com

The Clarion On The Web: www.cleoburyclarion.co.uk

Printed by Badger Print and Design of Shifnal, 01952 730511



Your local specialist supplier of
Insulation, Timber, Plywood and all Building Materials

THOMPSON & PARKES

SANDSTONE - Best offer locally!

A natural product, Stoneplus Raj Indian sandstone has subtle tones and ideal for traditional patios.

15.25m² patio packs including 900 x 600, 600 x 600, 600 x 300 and 300 x 300 slabs

Just £24.50/m² - £373.63 +VAT per pack

While stocks last and available at all outlets!



Proud to be Local

www.thompsonandparkes.co.uk

Stocking and Delivering all Your Building and DIY Materials

Kidderminster 01562 745881
Oldington Trading Estate DY11 7QP

Oreton 01746 718414
Cleobury Mortimer DY14 0TH

Stourport 01299 534545
Minster Road DY13 8AB